

GRRIP II Watershed Analysis for Plainville, MA

Estimates of Land Use, Impervious Surface and Annual Nonpoint Source Pollution Loads

Watershed 1

2003 Land Use Types

- Crop Land
- Pasture
- Forest
- Non-Forested Wetland
- Mining
- Open Land
- Participation Rec.
- Spectator Rec.
- Water Based Rec.
- Multi-Fam. Res.
- High Density Res.
- Medium Dens. Res.
- Low Dens. Res.
- Salt Water Wetland
- Commercial
- Industrial
- Urban Open
- Transportation
- Waste Disposal
- Water
- Woody Perennial (Includes Cranberry Bogs and Nurseries)

Land Use Allocation

63.0 acres

- PERC (0.4%)
- WATER (0.0%)
- AGRICULTURE (0.0%)
- CRANBERRY (0.0%)
- OPEN LAND (0.0%)
- WETLANDS (0.0%)
- WATER (0.0%)
- WETLANDS (0.0%)
- TRANSPORTATION (0.0%)
- WASTE (0.0%)
- WASTE (0.0%)



Land Use Area in Acres is 63.0

Impervious Area is 5.4 Acres

Percentage of Imperviousness = 8.5%

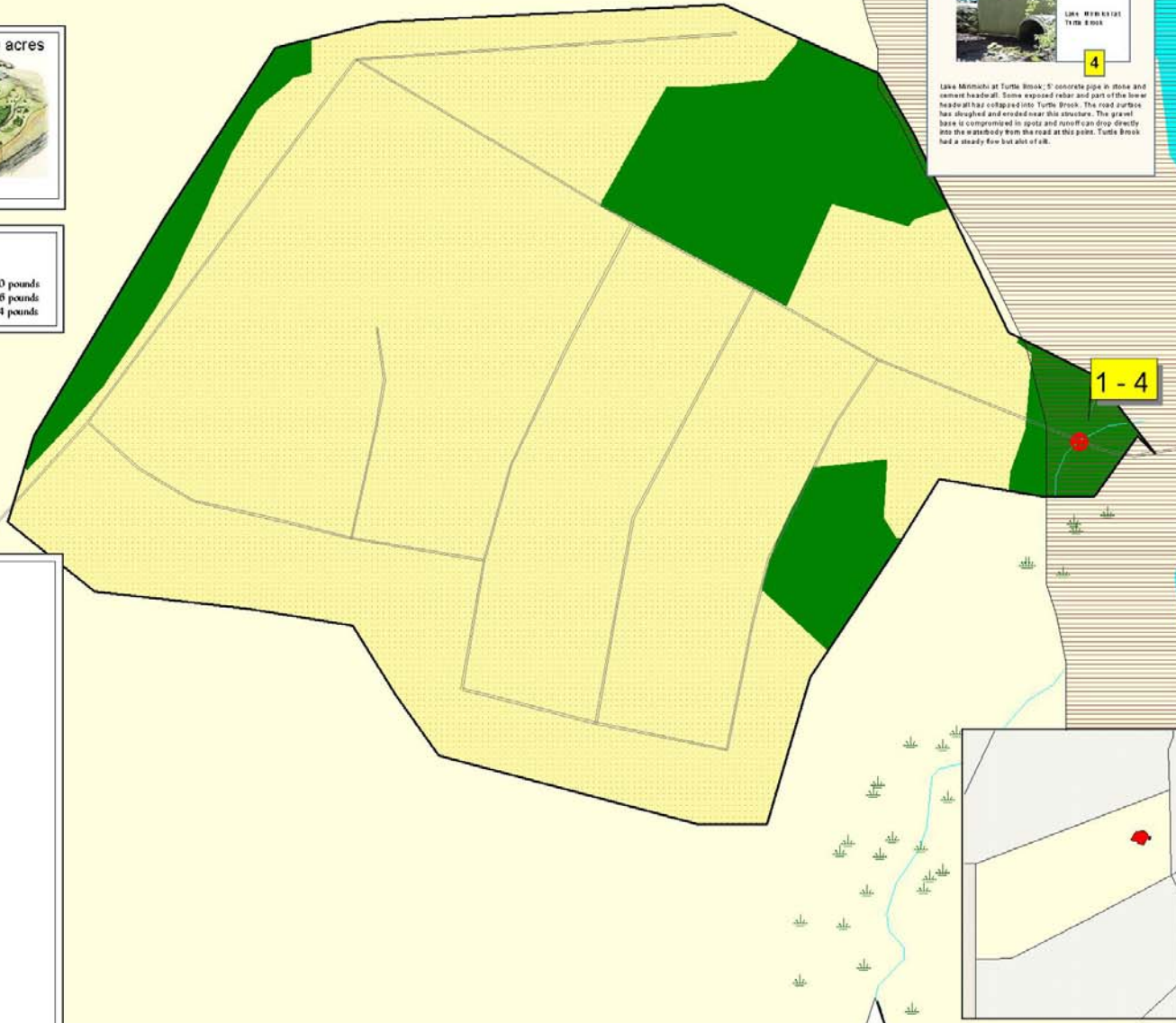
Avg Annual Nitrogen Load = 430.0 pounds

Avg Annual Phosphorus Load = 83.6 pounds

Avg Annual Suspended Solids = 18433.4 pounds



Lava Mitts at Turtle Brook. 5' concrete pipe in stone and cement headwall. Some exposed rebar and part of the lower headwall has collapsed into Turtle Brook. The road surface has sloughed and eroded near this structure. The gravel base is compromised in spots and runoff can drop directly into the waterbody from the road at this point. Turtle Brook had a steady flow but shot of it.



- ⊕ Drainage System
 - Potential Vernal Pool
 - Certified Vernal Pool
 - Public Water Supply
 - Public Beach
 - ★ Shellfish Beds
 - ★ Rarebird_noon
 - ★ Rarefish_noon
 - ★ Rarecrustacean_noon
 - ★ Rareinvertebrate_noon
 - ★ Rareinvertebrate_noon
 - ★ Rareinvertebrate_noon
 - Intermittent Wetland Protect
 - Cold Water Fisheries
 - Anadromous Fish Run
 - Critical Area after Storm Event
 - Wetlands
 - Solid Waste Facility
 - Estimated and Priority Habitats
 - ACEC
 - Zone 2
 - Zone B
 - ~ Rivers and Streams
 - ~ Lakes & Ponds
 - Road Island Towns
 - Other MA Towns
 - Town Boundary
 - Ocean
 - ~ Transmission Lines
 - ~ Railroad
- ### Roads (Mass Hwy Functional Classes)
- ~ Local Rd or Non-Eligible Functional Class Rd (F-0/F-1)
 - ~ Interstate (F-1)
 - ~ Rural Principal Arterial & Urban Env (F-2)
 - ~ Rural Minor Arterial & Urban Env (F-3)
 - ~ Other Urban Principal Arterial (F-4)
 - ~ Urban Minor Arterial or Rural Major Collector
 - ~ Urban Collector or Rural Minor Collector (F-5)

The GRRIP II (Geographic Roadway Runoff Inventory Program) is an analysis of roadway drainage facilities located in environmentally sensitive areas on defined Federal Aid Eligible Roads. GRRIP II analyzed towns in the SRPEDD region that fall within the Narragansett and Taunton River Watersheds. The Watershed Analysis Project further details several of the drainage systems within each of these towns in the Narragansett and the Taunton River Watersheds to show the general health of the contributing watershed from the specified drainage system by outplotting the area of imperviousness using the Scholar Watershed Methodology and the Watershed Tools Extension developed by Mass GIS.

Map prepared by
SRPEDD
88 Broadway, Taunton MA
August 2004

Watershed Analysis produced
using the Watershed Tools
Extension developed by
Mass GIS.

This map was produced by SRPEDD (Southeastern Regional Planning and Economic Development District), Taunton, MA. Portions of the source digital data may have been applied to the SRPEDD map by the Massachusetts Executive Office of Environmental Affairs, Massachusetts, Capital Corporation of Boston, MA, SRPEDD, the Bureau of Transportation Planning & Development, Division of Environmental Planning, Division of Planning & Information, Road and Bay Project, USDA, State Conservation Service, Coastal Land Management, Natural Climate, Atmospheric Assessment (NCA), and the Massachusetts Department of Transportation (MassDOT).

The location of features shown on this map are approximate and are provided for general information only. This map is an informational tool and is not intended for use in any legal proceeding.

The funding for this project was provided by the Federal Highway Administration (FHWA) within Massachusetts Highway Department.

This map was produced by SRPEDD (Southeastern Regional Planning and Economic Development District), Taunton, MA. Portions of the source digital data may have been applied to the SRPEDD map by the Massachusetts Executive Office of Environmental Affairs, Massachusetts, Capital Corporation of Boston, MA, SRPEDD, the Bureau of Transportation Planning & Development, Division of Environmental Planning, Division of Planning & Information, Road and Bay Project, USDA, State Conservation Service, Coastal Land Management, Natural Climate, Atmospheric Assessment (NCA), and the Massachusetts Department of Transportation (MassDOT).

The location of features shown on this map are approximate and are provided for general information only. This map is an informational tool and is not intended for use in any legal proceeding.

The funding for this project was provided by the Federal Highway Administration (FHWA) within Massachusetts Highway Department.

