

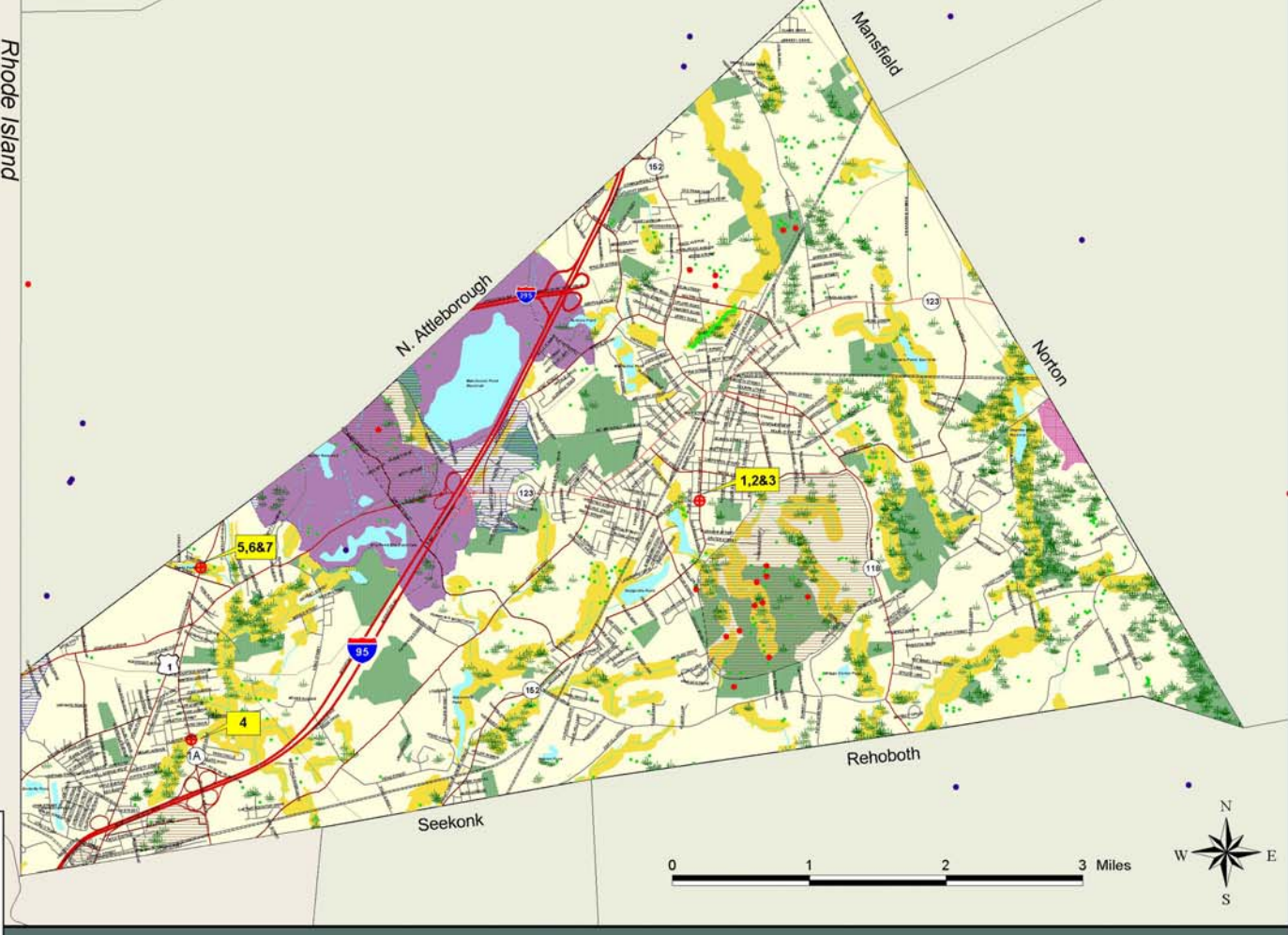
City of Attleboro, MA

GRRIP II (Geographic Roadway Runoff Inventory Program)

The City of Attleboro falls within the Ten Mile, Blackstone and Taunton River Watersheds.

- Location of a Storm Water Drainage System in an Environmentally Sensitive Area near a Federally Eligible Roadway
 - Town Boundary
 - Other Massachusetts Towns
 - Rhode Island Towns
 - MRIP Natural Lands Riparian Corridors 100 meters buffer
 - ACEC (Areas of Critical Environmental Concern)
 - Estimated & Priority Habitats (NHES)
 - Open Space (Includes Municipal, Permanently Protected, Private Non-Profit, Agricultural, Chapter 61A,B)
 - Wetlands
 - Interim Wetland Protection (1/2 mi radius)
 - Critical Areas after Storm Events/ DMF
 - Approved Zoning Protection Area (DEP)
 - Zone B Protection Area
 - EPA Sole Source Aquifer
 - Outstanding Resource Waters
 - Cranberry Bogs (Some Orchard/Nursery)
 - Solid Waste Facilities/CEP
 - Barrier Beaches
 - Transmission Lines
 - Railroads
 - Lakes & Ponds
 - Stream Intermittent Stream
 - Ocean
- Coldwater Fisheries/Rivers (DFW)
 - Coldwater Fisheries/Ponds (DFW)
 - Public Beach (NOAA)
 - Rare & Sensitive Crustacean (NOAA)
 - Rare & Sensitive Bivalve (NOAA)
 - Rare & Sensitive Reptile (NOAA)
 - Rare & Sensitive Fish (NOAA)
 - Rare & Sensitive Bird (NOAA)
 - DEP Seagrass
 - algae
 - eelgrass
 - NHESP Potential Vernal Pools
 - Certified Vernal Pools
 - Shellfish Beds
 - Anadromous Fish Runs
 - Public Water Supplies

- Local Rds & Other Non-Eligible Functional Class Rds
- Federal Road Inventory**
- Interstate (F-1)
 - Rural Principal Arterial & Urban Ext (F-2)
 - Rural Minor Arterial & Urban Ext (F-3)
 - Other Urban Principal Arterial (F-4)
 - Urban Minor Arterial or Rural Major Collector (F-5)
 - Urban Collector or Rural Minor Collector (F-6)



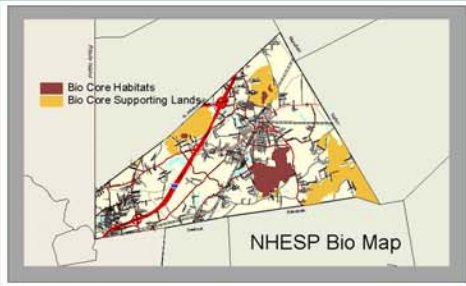
Ten Mile River behind RoJack's Plaza on South Main St near the railroad bridge. A lot of stone sloughing from the railroad grade, washing into the river. Some gullying along steep slopes. Three pipes carry stormwater from nearby streets and discharge into the Ten Mile River. One is 3' corrugated metal, the other two are AASHTO M294 plastic corrugated. There is a large sandy outfall near bridge.



Clayton St at Newport Ave.: new construction. Crack in concrete at the chamber joint just below the water table. Large sandy outfall at discharge point on the Seven Mile River.



Como Drive, Lake Como: some construction, new culvert and rip-rap. Lake Como is a prime example of what can happen to a shallow waterbody from silt, sediment and septic contributions - loss of open water area, eutrophication, foul odors, algae blooms. Como Drive divides the lake and has likely contributed a great deal to the problem over the years.



This mapping project was funded by the Massachusetts Department of Transportation (MassDOT) through the Massachusetts Department of Transportation's (MassDOT) Strategic Planning Program (SRPP) and the Massachusetts Department of Transportation's (MassDOT) Strategic Planning Program (SRPP).

The SRPP is a multi-year program that provides funding for transportation planning and engineering projects in the state. The SRPP is a multi-year program that provides funding for transportation planning and engineering projects in the state.

GRRIP II (Geographic Roadway Runoff Inventory Program) is an analysis of roadway drainage facilities in relation to intersecting environmentally sensitive areas on selected Federal Aid "functionally classified" roads. The GRRIP II project analyzed 11 SRPEDD towns within the Narragansett Bay Watershed Region and mapped those storm water drainage systems considered to be located in environmentally sensitive environmental areas.

This map was produced by SRPEDD (Southeastern Regional Planning and Economic Development District, Taunton, MA). Portions of the source digital data may have been supplied by the Massachusetts Executive Office of Environmental Affairs, MassDEP, Coastal Conservation of Taunton, MA, ES&P, the Bureau of Transportation Planning & Development, Division of Marine Fisheries, Division of Fisheries & Wildlife, RID&C, USGS, National Conservation Administration (NCA), Coastal Zone Management, National Oceanic & Atmospheric Administration (NOAA).

The location of water boundaries shown on this map are approximate and are intended for planning purposes only. This map is not intended for legal, engineering or survey purposes.

The funding for this project was provided by the Executive Office of Transportation (EOT) and the Massachusetts Highway Department under the United Way Program.

The Towns are Fall River, Freetown, Lakeville, Middleborough, Carver, Scituate, Wareham, Bridgewater, Taunton, Raynham, Seekonk, Rehoboth, Dighton, Attleboro, N. Attleborough, Norton, Mansfield, Plainville.