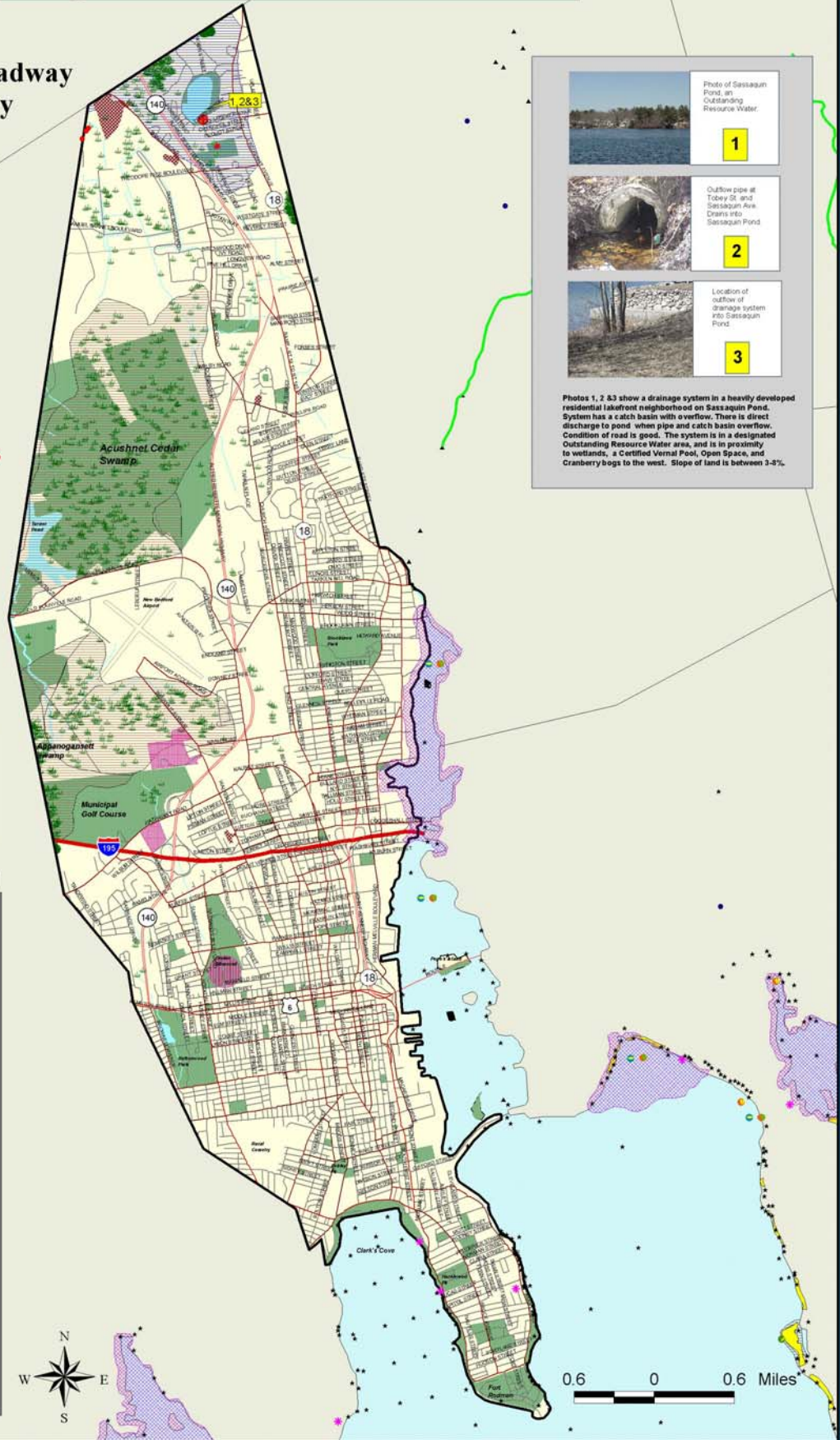


# City of New Bedford, MA

## GRRIP (Geographic Roadway Runoff Inventory Program)



All of New Bedford falls within the Buzzards Bay Watershed

- Local Rds & Other Non-Eligible Functional Class Rds
- Federal Road Inventory**
- Interstate (F-1)
  - Rural Principal Arterial & Urban Ext (F-2)
  - Rural Minor Arterial & Urban Ext (F-3)
  - Other Urban Principal Arterial (F-4)
  - Urban Minor Arterial or Rural Major Collector (F-5)
  - Urban Collector or Rural Minor Collector (F-6)

- Location of a Storm Water Drainage System in an Environmentally Sensitive Area near a Federally Eligible Roadway**
- Buzzards Bay Watershed
  - Town Boundary
  - Other Massachusetts Towns
  - Rhode Island Towns
  - ACEC (Areas of Critical Environmental Concern)
  - Estimated & Priority Habitats (NHES)
  - Open Space (includes Municipal, Permanently Protected, Private Non-Profit, Agricultural, Chapter 61A.B)
  - Wetlands
  - Interim Wellhead Protection (1/2 mi radius)
  - Critical Areas after Storm Events/ DMF
  - Approved Zonell Protection Area (DEOE)
  - Outstanding Resource Waters
  - Cranberry Bogs (some Orchard/Nursery)
  - Solid Waste Facilities/DEP
  - Barrier Beaches
  - Transmission Lines
  - Railroads
  - Lakes & Ponds
  - Rivers & Streams
  - Ocean
- Coldwater Fisheries/Rivers (DPW)
  - Coldwater Fisheries/Ponds (DPW)
  - Public Beach (NOAA)
  - Rare or Sensitive Crustacean (NOAA)
  - Rare or Sensitive Bivalve (NOAA)
  - Rare or Sensitive Reptile (NOAA)
  - Rare or Sensitive Fish (NOAA)
  - Rare or Sensitive Bird (NOAA)
  - Certified Vernal Pools
  - Shellfish Beds
  - Anadromous Fish Runs
  - Public Water Supplies

**1** Photo of Sassaquin Pond, an Outstanding Resource Water.

**2** Overflow pipe at Tobey St and Sassaquin Ave. Drains into Sassaquin Pond.

**3** Location of outflow of drainage system into Sassaquin Pond.

Photos 1, 2 & 3 show a drainage system in a heavily developed residential lakfront neighborhood on Sassaquin Pond. System has a catch basin with overflow. There is direct discharge to pond when pipe and catch basin overflow. Condition of road is good. The system is in a designated Outstanding Resource Water area, and is in proximity to wetlands, a Certified Vernal Pool, Open Space, and Cranberry bogs to the west. Slope of land is between 3-8%.



This map was produced by SRPEDD (Southeastern Regional Planning and Economic Development District) Taunton, MA. Portions of the source digital data may have been supplied by the Massachusetts Executive Office of Environmental Affairs, MassGIS, Caliper Corporation of Newbury, MA, ESRI, the Bureau of Transportation Planning & Development, Division of Marine Fisheries, Division of Fisheries & Wildlife, Buzzards Bay Project, USDA, Soils Conservation Service, Coastal Zone Management, National Oceanic & Atmospheric Administration (NOAA).

The location of feature boundaries shown on this map are approximate and are intended for planning purposes only. This map is not intended for legal, engineering or survey purposes.

The funding for this project was provided by the Executive Office of Transportation (EOTC) and the Massachusetts Highway Department under the STP Transportation Enhancements Program.

The GRRIP (Geographic Roadway Runoff Inventory Program) is an analysis of roadway drainage facilities in relation to intersecting environmentally sensitive areas on defined Federal Aid "functionally classed" roads. The GRRIP project analyzed 14 SRPEDD towns within the Buzzards Bay Watershed Region and mapped those storm water drainage systems considered to be located in critically sensitive environmental areas.

The Towns analyzed for this project: Acushnet, Carver, Dartmouth, Fairhaven, Fall River, Freetown, Lakeville, Marion, Mattapoisett, Middleborough, New Bedford, Rochester, Wareham, Westport.

This map was produced by SRPEDD (Southeastern Regional Planning and Economic Development District) Taunton, MA. Portions of the source digital data may have been supplied by the Massachusetts Executive Office of Environmental Affairs, MassGIS, Caliper Corporation of Newbury, MA, ESRI, the Bureau of Transportation Planning & Development, Division of Marine Fisheries, Division of Fisheries & Wildlife, Buzzards Bay Project, USDA, Soils Conservation Service, Coastal Zone Management, National Oceanic & Atmospheric Administration (NOAA).

The location of feature boundaries shown on this map are approximate and are intended for planning purposes only. This map is not intended for legal, engineering or survey purposes.

The funding for this project was provided by the Executive Office of Transportation (EOTC) and the Massachusetts Highway Department under the STP Transportation Enhancements Program.