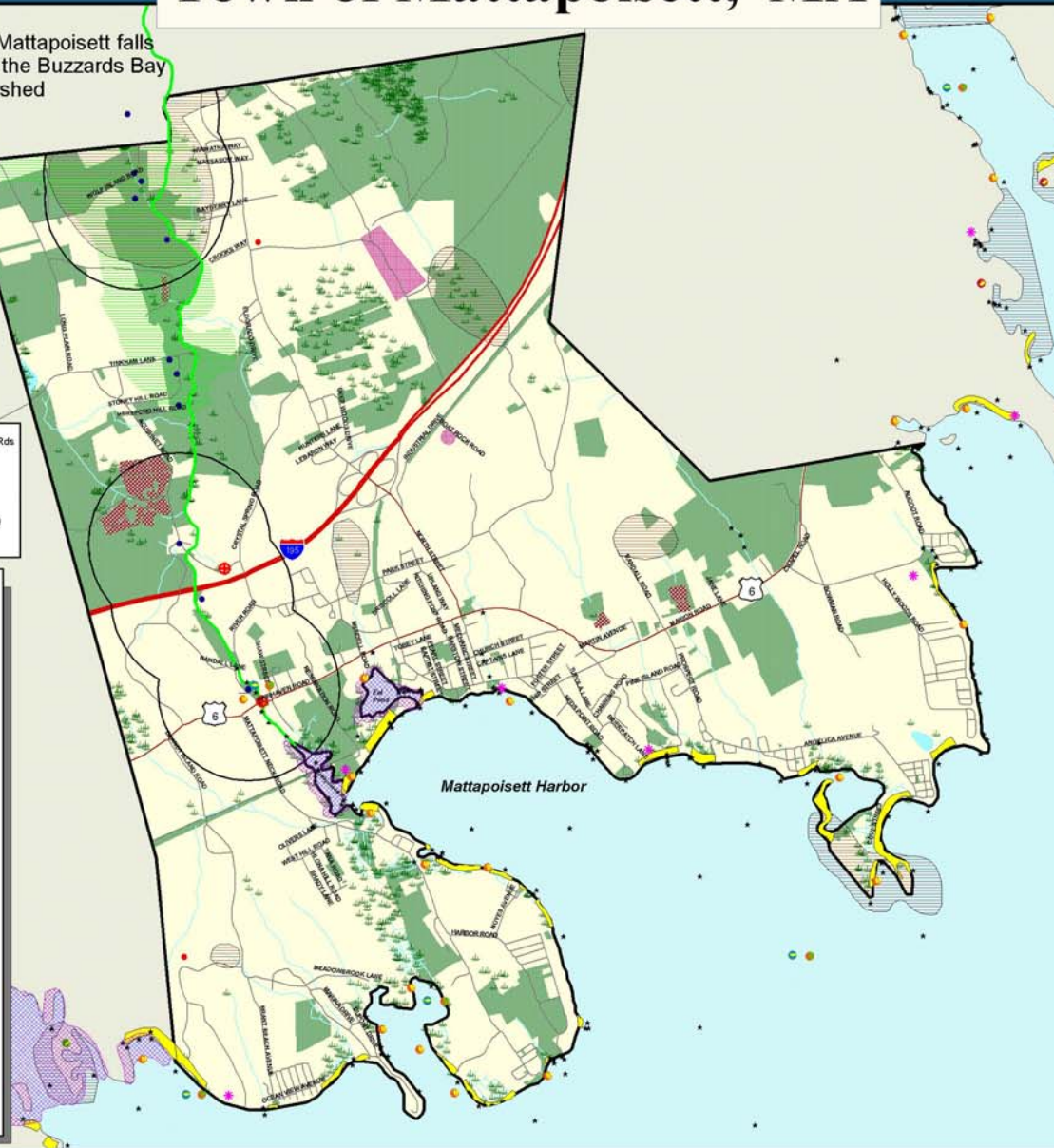


Town of Mattapoisett, MA

All of Mattapoisett falls within the Buzzards Bay Watershed

GRRIP (Geographic Roadway Runoff Inventory Program)



1



2

Photos 1&2 show a catch basin system with overflow pipes into the Mattapoisett River. Direct discharge into the river would only be through the wetlands and the overflow pipe. General condition of both the roadway and the storm drain is good. The land area surrounding the drainage system is a Riverbank Resource, Marsh, Wetlands, and Open Space. There is an on-site Anadromous Fish Run Facility, an Interim Wetland Protection area, the area is considered a Critical Area after Storm Event; Barrier Beaches; Rare or Sensitive Fish, Crustacean and Bi-Valve Species and Shellfish Beds. The slope of land is greater than 36% at the point of investigation but varies from 0-3% through the wetlands.



3



4

Photos 3&4 show a shallow catch basin drainage system with overflow into the river when basin and pipe are full. Catch basin shows evidence of silt and vegetative debris and requires cleaning. General condition of the roadway is good. The land surrounding the system is a vegetated old meadow wetlands that is dense in spots. In proximity is Open Space, Cranberry Bogs, a Zone II Wetland Protection area, a Cold Water Fisheries and Public Drinking Supply Waters. Slope of land is greater than 36% at the observation point but the flow of water was very slow and shallow.



SRPEDD
Southeastern Regional Planning & Economic Development District
Taunton, MA
June 2020



MASS GIS
Massachusetts Geographic Information System
Taunton, MA
June 2020

The GRRIP (Geographic Roadway Runoff Inventory Program) is an analysis of roadway drainage facilities in relation to intersecting environmentally sensitive areas or defined Federal Aid "functionally classed" roads. The GRRIP project analyzed 14 SRPEDD towns within the Buzzards Bay Watershed Region and mapped those storm water drainage systems considered to be located in critically sensitive environmental areas.

The Towns are Acushnet, Carver, Dartmouth, Fairhaven, Fall River, Freetown, Lakeville, Marion, Mattapoisett, Middleborough, New Bedford, Rochester, Wareham, Westport

This map was produced by SRPEDD (Southeastern Regional Planning and Economic Development District) Taunton, MA. Portions of the source digital data may have been supplied by the Massachusetts Executive Office of Environmental Affairs, MassGIS, Caliper Corporation of Newton, MA, ESRI, the Bureau of Transportation Planning & Development, Division of Marine Fisheries, Division of Fisheries & Wildlife, Buzzards Bay Project, USGS, Soils Conservation Service, Coastal Zone Management, National Oceanic & Atmospheric Administration (NOAA).

The location of feature boundaries shown on this map are approximate and are intended for planning purposes only. This map is not intended for legal engineering or survey purposes.

The funding for this project was provided by the Executive Office of Transportation (EOTC) and the Massachusetts Highway Department under the STP Transportation Enhancements Program.