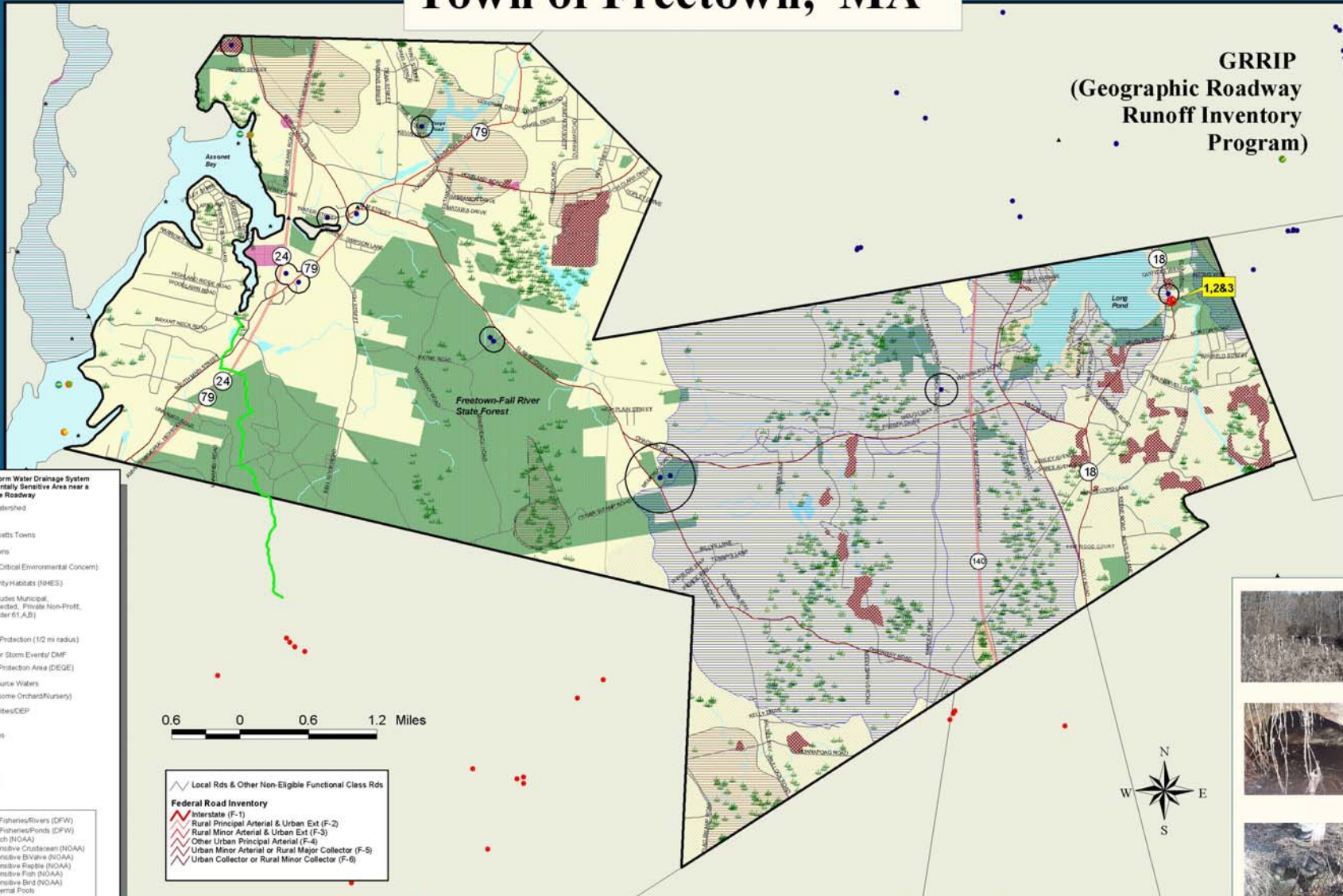


# Town of Freetown, MA

## GRRIP (Geographic Roadway Runoff Inventory Program)



- Location of a Storm Water Drainage System in an Environmentally Sensitive Area near a Federally Eligible Roadway
  - Buzzards Bay Watershed
  - Town Boundary
  - Other Massachusetts Towns
  - Rhode Island Towns
  - ACEC (Areas of Critical Environmental Concern)
  - Estimated & Priority Habitats (NHES)
  - Open Space (includes Municipal, Permanently Protected, Private Non-Profit, Agricultural, Chapter 61A,B)
  - Wetlands
  - Interim Wetland Protection (1/2 mi radius)
  - Critical Areas after Storm Events/ CAME
  - Approved Zonal Protection Area (DEGE)
  - Outstanding Resource Waters
  - Cranberry Bogs (some Orchard/Nursery)
  - Solid Waste Facilities/CEP
  - Barren Beaches
  - Transmission Lines
  - Railroads
  - Lakes & Ponds
  - Rivers & Streams
  - Ocean
- 
- Coldwater Fisheries/Rivers (DFW)
  - Coldwater Fisheries/Ponds (DFWP)
  - Public Beach (NOAA)
  - Rare or Sensitive Crustacean (NOAA)
  - Rare or Sensitive Invertebrate (NOAA)
  - Rare or Sensitive Reptile (NOAA)
  - Rare or Sensitive Fish (NOAA)
  - Rare or Sensitive Bird (NOAA)
  - Certified Vernal Pools
  - Shellfish Beds
  - Anadromous Fish Runs
  - Public Water Supplies

0.6 0 0.6 1.2 Miles

- Local Rds & Other Non-Eligible Functional Class Rds
- Federal Road Inventory**
- Interstate (F-1)
  - Rural Principal Arterial & Urban Ext (F-2)
  - Rural Minor Arterial & Urban Ext (F-3)
  - Other Urban Principal Arterial (F-4)
  - Urban Minor Arterial or Rural Major Collector (F-5)
  - Urban Collector or Rural Minor Collector (F-6)



Photo 1, 2, & 3 show drainage at the Freetown public boat landing area. The culvert-style drainage system has much sediment buildup at the outflow pipe which deposits drainage into a separate wetlands area, flowing for several hundred feet before emptying into Long Pond. There is standing water in the drainage swale. The wetland is forested, open water with cat tail and shows signs of siltation and vegetative encroachment. The water has minimal flow. Roadway condition is good. Long Pond is a designated Outstanding Resource Water and a Zone II surface water supply protection area. The pond is also a Priority Habitat and part of the Assawamsett Ponds Water Supply network. In addition, it is located near Open Space, Cranberry Bogs, and a public drinking supply water area. Overall, slope of the land is between 1% - 30%. The pond is also used as a recreational swimming area.



The funding for this project was provided by the Executive Office of Transportation (BOT) and the Massachusetts Highway Department under the STP Transportation Enhancements Program.



Map Produced by SRPEDD  
Middlesex County Planning & Economic Development  
Freetown, MA  
June 2007

The GRRIP (Geographic Roadway Runoff Inventory Program) is an analysis of roadway drainage facilities in relation to intersecting environmentally sensitive areas on defined Federal Aid "functionally classed" roads. The GRRIP project analyzed 14 SRPEDD towns within the Buzzards Bay Watershed Region and mapped those storm water drainage systems considered to be located in critically sensitive environmental areas.

The Towns are Acushnet, Carver, Dartmouth, Fairhaven, Fall River, Freetown, Lakeville, Marion, Mattapoisett, Middleborough, New Bedford, Rochester, Wareham, Westport

This map was produced by SRPEDD (Southeastern Regional Planning and Economic Development District) Taunton, MA. Portions of the source digital data may have been supplied by the Massachusetts Executive Office of Environmental Affairs, Massachusetts Caliper Corporation of Newton, MA, ES&I, the Bureau of Transportation Planning & Development, Division of Marine Fisheries, Division of Fisheries & Wildlife, Buzzards Bay Project, USDA, Soil Conservation Service, Coastal Zone Management, National Oceanic & Atmospheric Administration (NOAA)

The location of feature boundaries shown on this map are approximate and are intended for planning purposes only. This map is not intended for legal, engineering or survey purposes.

The funding for this project was provided by the Executive Office of Transportation (BOT) and the Massachusetts Highway Department under the STP Transportation Enhancements Program.