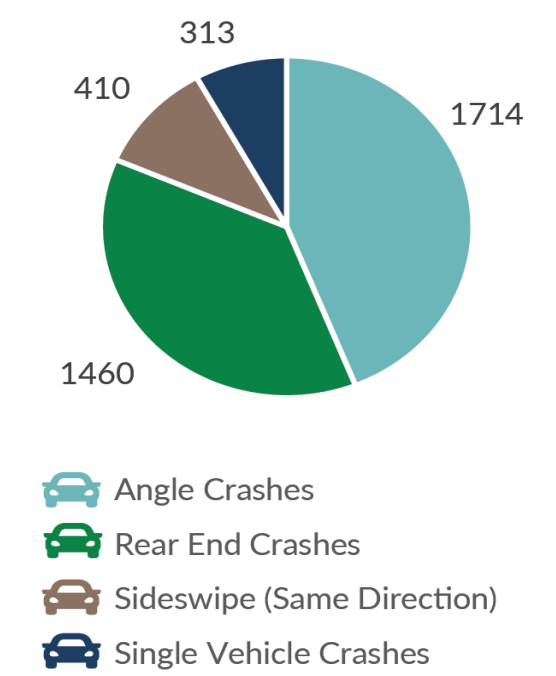


# TOP 100 MOST DANGEROUS INTERSECTIONS IN SOUTHEASTERN MASSACHUSETTS

RANK	CITY/TOWN	INTERSECTION		2017-2019 EPDO	2017-2019 TOTALS	STATUS
1	Swansea	GAR Highway (Rte 6)	J.Reynolds Rd./Market St. (Rte 136)	82.33	135	Improvements Planned
2	Fall River	Plymouth Ave.	Rodman St.	82.33	119	Improvements Completed in 2015
3	New Bedford	Ashley Blvd/JFK Hwy SB (Rte 18)	Coggeshall St.	74.33	91	Improvements Completed in 2019
4	New Bedford	Kempton St. (Rte 6)	Route 140/Brownell Ave.	72.33	88	Improvements Completed in 2015
5	Taunton	Washington St.	East Britannia St.	53.33	56	
6	Plainville	Taunton St. (Rte 152)	Messenger St. (Rte 106)	51.33	102	
7	Swansea	GAR Highway (Rte 6)	Swansea Mall Dr. (Rte 118)	51.00	85	Improvements Planned
8	New Bedford	JFK Highway (Rte 18)	Potomska St.	46.67	52	Improvements Completed in 2019
9	Somerset	GAR Highway (Rte 6)	Lee's River Ave.	45.33	48	Improvements Planned
10	New Bedford	JFK Highway (Rte 18)	Elm St.	43.67	55	Improvements Completed in 2014
11	New Bedford	Ashley Blvd.	Sawyer St.	37.67	45	
12	New Bedford	Route 6/Kempton St.	Pleasant/Purchase/Sixth/Middle	37.00	47	Improvements Completed in 2015
13	Middleborough	Route 44	Plymouth St.	36.67	46	Improvements Completed in 2009
14	Fall River	Bedford St.	Troy St./High St.	35.67	39	Improvements Planned
15	Seekonk	Fall River Ave. (Rte 6)	Mink St. (Rte 114A)	35.00	53	Improvements Completed in 2005
16	Fall River	President Ave. (Rte 6)	Robeson St.	34.33	31	
17	Seekonk	Fall River Ave. (Rte 114A)	Taunton Ave. (Rte 44)	33.67	53	Improvements Planned
18	Dartmouth	State Rd. (Rte 6)	Faunce Corner Rd./Old Wstp.Rd.	33.33	36	Improvements Planned
19	Seekonk	Fall River Ave. (Rte 6)	Commerce Way/Seekonk Sq.	33.00	55	
20	Taunton	Washington St.	Jackson St.	33.00	35	
21	Mansfield	Chauncy St. (Rte 106)	Copeland Dr.	32.67	50	Improvements Planned
22	Somerset	GAR Highway (Rte 6)	Brayton Point Rd.	32.33	53	
23	N. Attleborough	S. Washington St (Rte 1)	Emerald Square Mall (#999)	31.67	43	Studied by SRPEDD
24	Middleborough	East/West Grove St. (Rte 28)	South Main St. (Rte 105)	31.33	70	Improvements Planned
25	Fall River	Davol St.	Central St.	31.00	41	Improvements Completed in 2017

## CRASH TYPE



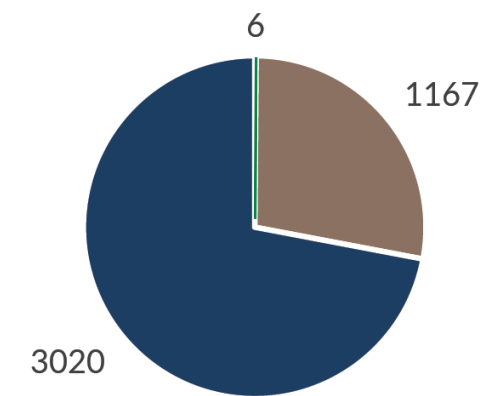
- Angle Crashes
- Rear End Crashes
- Sideswipe (Same Direction)
- Single Vehicle Crashes



# TOP 100 MOST DANGEROUS INTERSECTIONS IN SOUTHEASTERN MASSACHUSETTS

RANK	CITY/TOWN	INTERSECTION	2017-2019 EPDO	2017-2019 TOTALS	STATUS	
26	New Bedford	Acushnet Ave./JFK Hwy NB (Rte 18)	Coggeshall St.	31.00	36	Improvements Completed in 2019
27	New Bedford	County St.	Kempton St.	30.67	32	Improvements Completed in 2014
28	Somerset	GAR Highway (Rte 6)	Brayton Ave.	30.67	32	
29	Raynham	New State Hwy. (Rte 44)	Paramount Dr./Walmart	30.33	35	
30	Wareham	Cranberry Hwy. WB (Rte 6 & 28)	Glen Charlie Rd./Depot St.	30.00	54	
31	New Bedford	Church St.	Tarkiln Hill Rd.	30.00	30	Improvements Underway
32	Attleboro	Pleasant St. (Rte 123)	Peck St.	29.67	37	
33	Fall River	President Ave. (Rte 6)	Highland Ave.	29.67	33	
34	Attleboro	Washington St. (Rte 1)	Highland Ave. (Rte 123)	29.33	48	Improvements Planned
35	Raynham	New State Hwy. (Rte 44)	Shaws Plaza (#270-350)	29.33	36	
36	Plainville	Washington St. (Rte 1)	Taunton St. (Rte 152)	29.00	55	Improvements Planned
37	Taunton	Broadway (Rte 138)	Washington St.	29.00	47	Improvements Planned
38	New Bedford	JFK Highway (Rte 18)	Cove St./Rodney French	28.67	38	Improvements Completed in 2019
39	Taunton	County St. (Rte 140)	Hart St.	28.33	53	Improvements Completed in 2019
40	New Bedford	Kempton St. (Rte 6)	Rockdale Ave.	28.33	45	
41	Mansfield	Chauncy St. (Rte 106)	Forbes Blvd.	28.33	37	
42	Mansfield	Route 140	School St.	28.00	40	Improvements Completed in 2018
43	New Bedford	County St.	Union St.	28.00	32	Improvements Planned
44	Dartmouth	State Rd. (Rte 6)	Hathaway Rd.	27.67	35	Improvements Planned
45	Mansfield	Chauncy St. (Rte 106)	Rte 140	27.33	38	Improvements Planned
46	New Bedford	County St.	Rivet St.	27.33	34	Improvements Planned
47	Swansea	GAR Highway (Rte 6)	Maple Ave.	27.00	40	Improvements Planned
48	New Bedford	County St.	Mill St.	27.00	33	Improvements Completed in 2014
49	Taunton	Washington St./Oak St.	Tremont St. (Rte 140)	26.67	40	
50	Raynham	Broadway (Rte 138)	Carver St.	26.67	31	Improvements Planned

## CRASH SEVERITY



- Fatalities
- Injury Crashes
- Property Damage Only



# TOP 100 MOST DANGEROUS INTERSECTIONS IN SOUTHEASTERN MASSACHUSETTS

RANK	CITY/TOWN	INTERSECTION	2017-2019 EPDO	2017-2019 TOTALS	STATUS	
51	N. Attleborough	E. Wash. (Rte 1)/N. Wash (Rte 1A)	Elmwood St./Park St.	26.00	38	
52	Fall River	Broadway	S.Main St./Globe St.	26.00	34	
53	New Bedford	JFK Highway (Rte 18)	Union St.	25.67	41	Improvements Completed in 2014
54	New Bedford	Hathaway Rd.	Shawmut Ave.	25.00	35	
55	New Bedford	Rockdale Ave.	Allen St.	25.00	35	Improvements Underway
56	Fall River	Pleasant St.	Quequechan St.	25.00	31	
57	New Bedford	Mount Pleasant St.	Nash Rd.	25.00	31	Improvements Planned
58	New Bedford	Brock Ave./Cove Rd.	W. Rodney French Blvd.	24.67	38	
59	N. Attleborough	S.& E. Washington St. (Rte 1/1A)	Hoppin Hill Rd. (Rte 120)	24.67	37	Improvements Completed in 2018
60	Fall River	Broadway	William St.	24.67	34	
61	New Bedford	Pleasant St.	Elm St.	24.67	34	
62	Wareham	Cranberry Hwy. (Rte 28)	Home Depot (#2994-8)	24.67	34	Improvements Underway
63	New Bedford	Rockdale Ave.	Dartmouth St.	24.33	41	Improvements Completed in 2012
64	Raynham	New State Hwy. (Rte 44)	Orchard St.	24.33	37	Improvements Completed in 2016
65	New Bedford	Belleville Ave.	Coggeshall St.	24.33	29	Improvements Completed in 2019
66	New Bedford	Church St.	Park Ave.	24.33	25	Improvements Underway
67	Attleboro	Newport Ave. SB (Rte 1A)	Collins St.	24.00	36	
68	Attleboro	Newport Ave. (Rte 1A)	Carelton St./Pitas Ave.	24.00	28	
69	Swansea	GAR Highway (Rte 6)	Gardner's Neck Rd.	24.00	24	Improvements Planned
70	Fairhaven	Bridge St.	Alden Rd.	23.67	59	Improvements Completed in 2012
71	Dartmouth	Fauce Corner Rd.	Cross Rd.	23.67	35	Improvements Completed in 2016
72	New Bedford	Church St.	Nash Rd.	23.67	31	
73	New Bedford	Ashley Blvd.	Wood St.	23.67	27	
74	Seekonk	Taunton Ave. (Rte 44)	Lincoln Ave.	23.67	27	Improvements Underway
75	Taunton	Taunton Green	Main St./Weir St.	23.33	38	

The data utilized in this publication is for the purpose of identifying, evaluating or planning the safety enhancement of potential crash sites, hazardous roadway conditions or railway-highway crossings. MassDOT makes no representation as to the accuracy, adequacy, reliability, availability or completeness of the crash records or the data collected from them and is not responsible for any errors or omissions in such records or data. Crash records or data provided for the years after 2018 are subject to change at any time and are not to be considered up-to-date or complete. Under federal law, this information is not subject to discovery and cannot be admitted into evidence in any federal or state court proceeding or considered for other purposes in any action for damages that involves the sites mentioned in these records (see 23 USC, Section 409).

The preparation of this report has been financed in part through grant[s] from the Federal Highway Administration and Federal Transit Administration, U.S. Department of Transportation, under the State Planning and Research Program, Section 505 [or Metropolitan Planning Program, Section 104(f)] of Title 23, U.S. Code. The contents of this report do not necessarily reflect the official views or policy of the U.S. Department of Transportation.



# TOP 100 MOST DANGEROUS INTERSECTIONS IN SOUTHEASTERN MASSACHUSETTS

RANK	CITY/TOWN	INTERSECTION		2017-2019 EPDO	2017-2019 TOTALS	STATUS
76	Attleboro	N. Main St. (Rte 152)	Robert F Toner Blvd.	23.00	37	
77	N. Attleborough	E. Washington St. (Rte 1)	Chestnut St.	23.00	33	Improvements Completed in 2019
78	Westport	State Rd. (Rte 6)	Sanford Rd.	23.00	29	Under Study by MassDOT & SRPEDD
79	New Bedford	King's Hwy.	Fieldstone Mktplace (#500)	23.00	29	Improvements Underway
80	Attleboro	N. Main St. (Rte 152)	Holden St.	22.67	28	
81	New Bedford	Mt. Pleasant St.	Nauset St.	22.67	28	Improvements Underway
82	New Bedford	Rockdale Ave.	Bolton St.	22.33	27	
83	Fairhaven	Huttleston Ave. (Rte 6)	Alden Rd.	22.00	50	
84	Seekonk	Fall River Ave. (Rte 114A)	County St.	22.00	46	Improvements Underway
85	Middleborough	Route 44	Plympton St. (Rte 105)	22.00	42	Improvements Completed in 2010
86	New Bedford	Ashley Blvd.	Nash Rd.	22.00	34	
87	Fairhaven	Huttleston Ave. (Rte 6)	Sconticut Neck/Rte 240	21.67	49	Improvements Completed in 2012
88	Somerset	GAR Highway (Rte 6)	Stop & Shop (#815-887)	21.67	33	
89	N. Attleborough	E. Washington St. (Rte 1)	Orne St./Landry Ave.	21.67	29	
90	Mansfield	Chauncy St. (Rte 106)	N. Main St.	21.33	36	Improvements Planned
91	Fall River	Broadway	Bradford Ave.	21.33	32	
92	Somerset	Wilbur Ave. (Rte 103)	Brayton Point Rd.	21.33	28	Studied by SRPEDD
93	Taunton	Winter St.	School St./Floral St.	21.00	27	
94	New Bedford	Acushnet Ave.	Phillips Rd.	20.67	42	
95	Fairhaven	Bridge St.	Route 240	20.67	38	Improvements Completed in 2012
96	Somerset	Wilbur Ave. (Rte 103)	Lee's River Ave.	20.67	26	Studied by SRPEDD
97	Plainville	Washington St. (Rte 1)	George St.	20.67	25	Improvements Planned
98	Fall River	Broadway	Middle St.	20.67	22	
99	New Bedford	Acushnet Ave.	Ashley Blvd./Belair St.	20.33	25	
100	Taunton	Bay St.	Myles Standish Blvd./Ind Park Rd.	20.00	40	

FOR MORE INFORMATION REGARDING THE TOP 100 MOST DANGEROUS INTERSECTIONS IN SOUTHEASTERN MASSACHUSETTS

PLEASE CONTACT:

Lisa Estrela-Pedro  
Assistant Director of  
Transportation Planning

Southeastern Regional Planning &  
Economic Development District

88 Broadway Taunton, MA 02780

☎ 508-824-1367

✉ [lestrela@srpedd.org](mailto:lestrela@srpedd.org)

🌐 [www.srpedd.org](http://www.srpedd.org)

Everyone is invited to participate in our transportation planning process, regardless of race, color, national origin (including limited English proficiency), religion, creed, gender, ancestry, ethnicity, disability, age, sex, sexual orientation, gender identity or expression, veteran's status, or background. Please visit <https://srpedd.org/title-vi-compliance/> for rights and protections.

To request special accommodations, or if you need this information in another language, contact [lcabral@srpedd.org](mailto:lcabral@srpedd.org).



**SRPEDD**  
Southeastern Regional Planning  
& Economic Development District