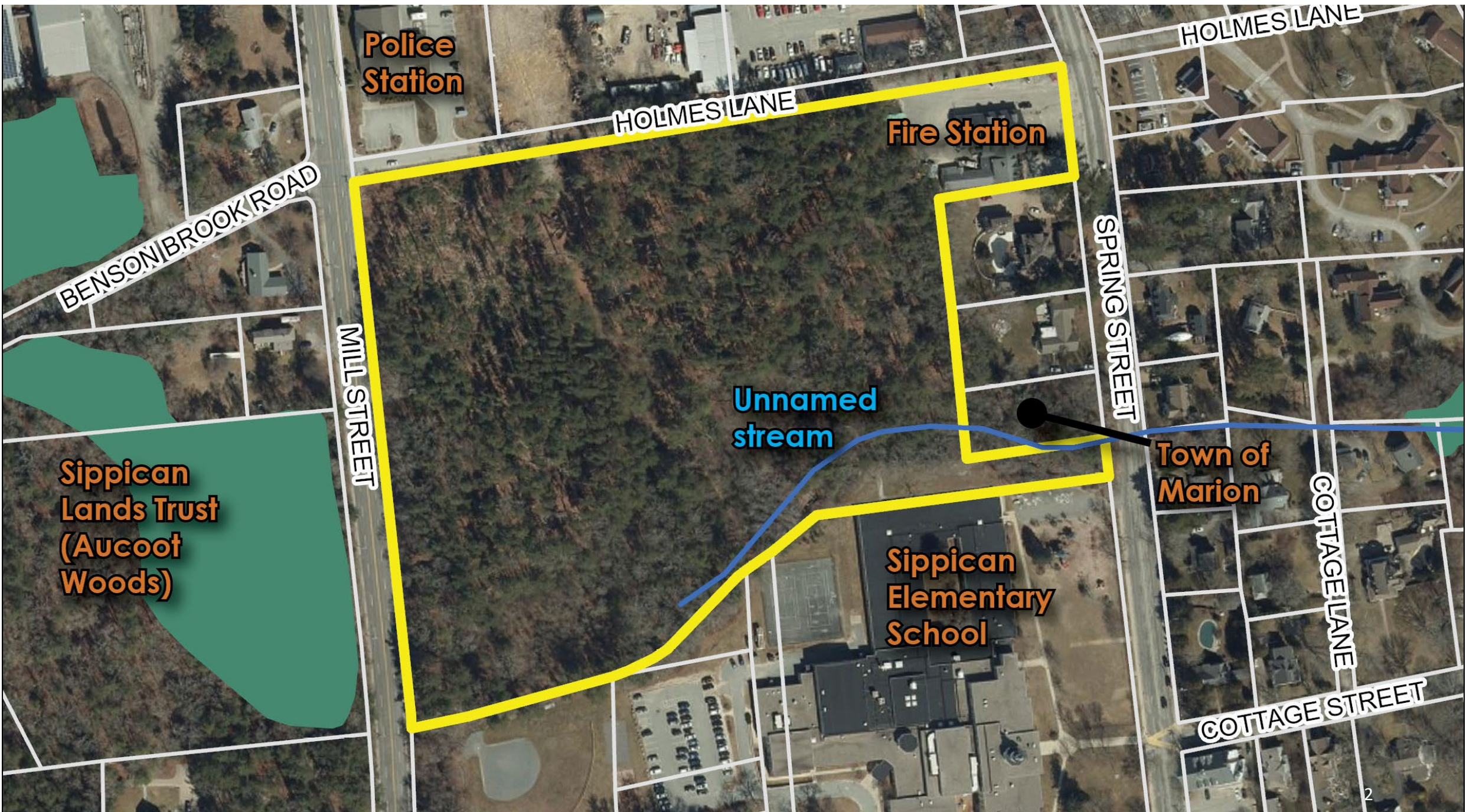


# Holmes Woods

---







**Police  
Station**

HOLMES LANE

HOLMES LANE

**Fire Station**

BENSON BROOK ROAD

MILL STREET

Unnamed  
stream

SPRING STREET

**Town of  
Marion**

COTTAGE LANE

COTTAGE STREET

**Sippican  
Lands Trust  
(Aucoot  
Woods)**

**Sippican  
Elementary  
School**

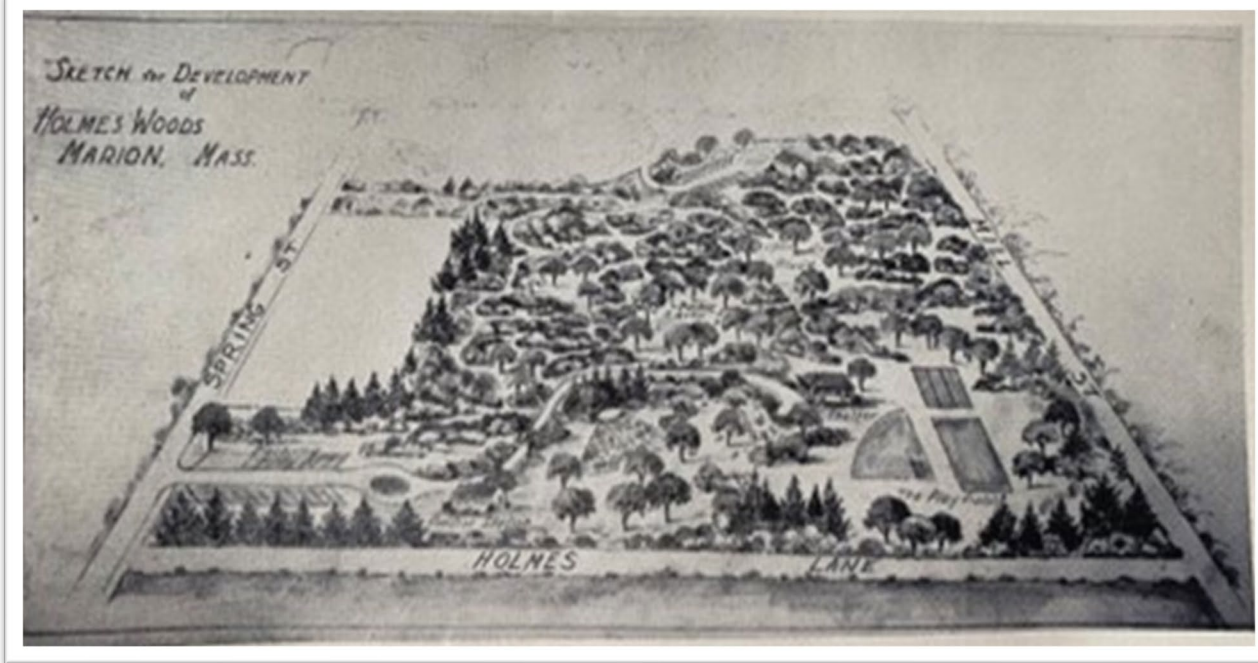




*“...to be held by said town for the proper use of the inhabitants thereof as a pleasure ground or park. It is my purpose that it not be in any sense a burden on the town but kept mainly in forest and be gradually improved and cared for as may be determined at the annual town meeting”*

- Barnabas Holmes





In 1945, there were plans drafted for the Holmes Woods property. It shows a comfort station, parking, playing fields, and what looks like an outdoor amphitheater.



It also has two entrances, one through what is now the Fire Department parking lot, and another at the other of Park Street.



# **Town of Marion Open Space and Recreation Plan 2023-2030**



## **Section 9: Action Plan**

The Action Plan items contained in Section 9 are the result of a rigorous public survey process, a public forum, and Committee review. These Actions are not listed in a particular order of priority or in a chronological sequence. The Action Plan is meant to be flexible and responsive, as some of the Actions listed are in the process of being addressed, while others will be addressed as opportunities present themselves.

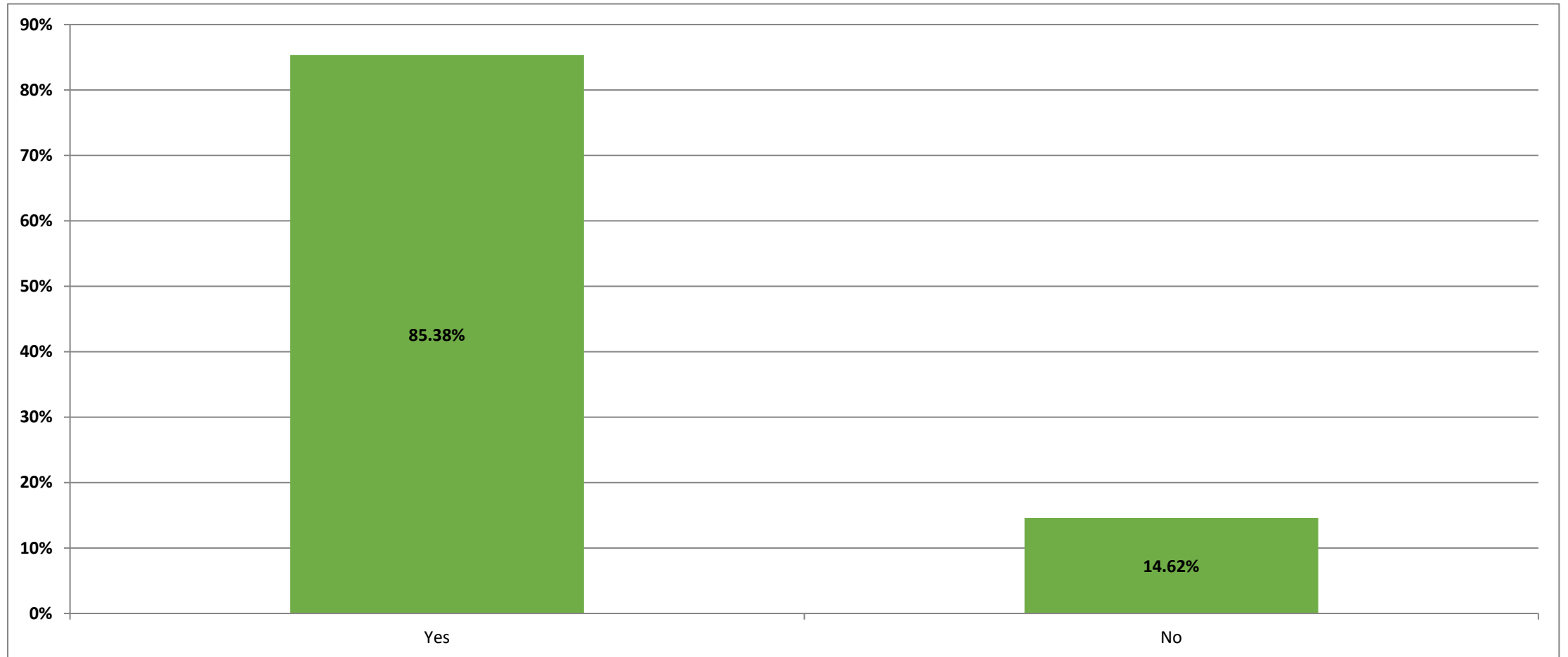
<b>19</b>	<b>Action: Create a comprehensive management plan for the use of Holmes Woods</b>	
	<b>Local Lead / Partners</b>	Local Lead: Tree and Parks Committee Recreation, Selectmen, Conservation, SoCOS, Planning, others as necessary or required
	<b>Goals / Objectives Addressed</b>	Goal 4, Objective c
	<b>Potential Funding Sources</b>	local, DCS



# Survey Results

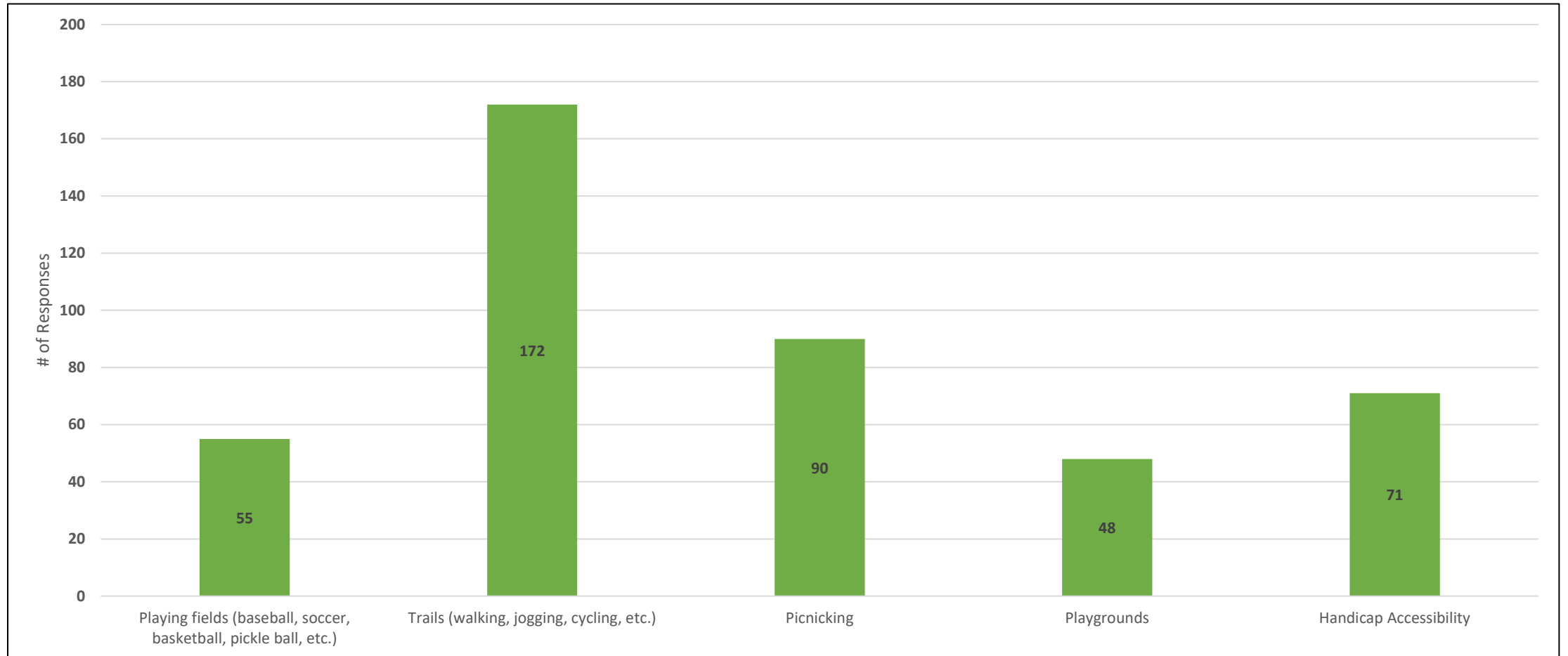


## Q6. Do you think that Holmes Woods provides an opportunity to enhance Marion's recreational assets?



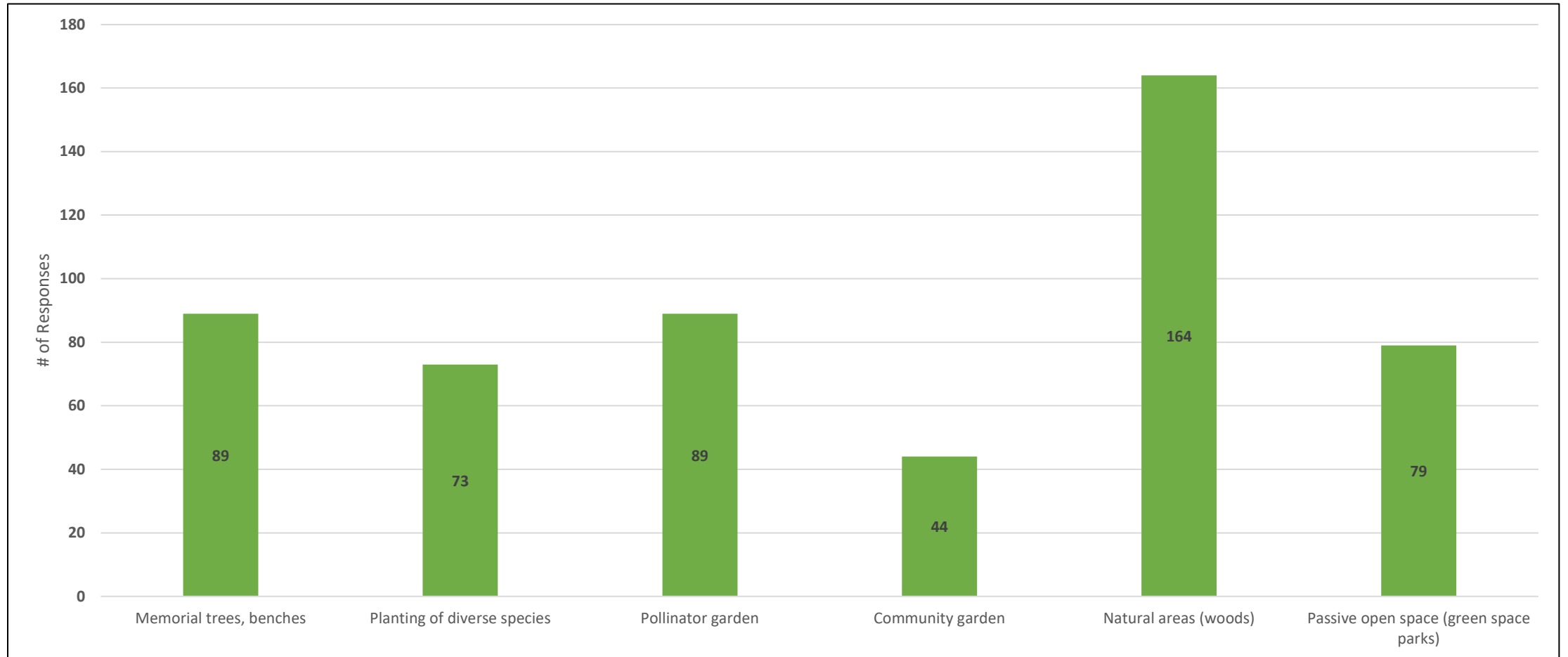


# Q7. Which specific recreational activities would you like to see as part of a redesigned Holmes Woods Park? (select all that apply)



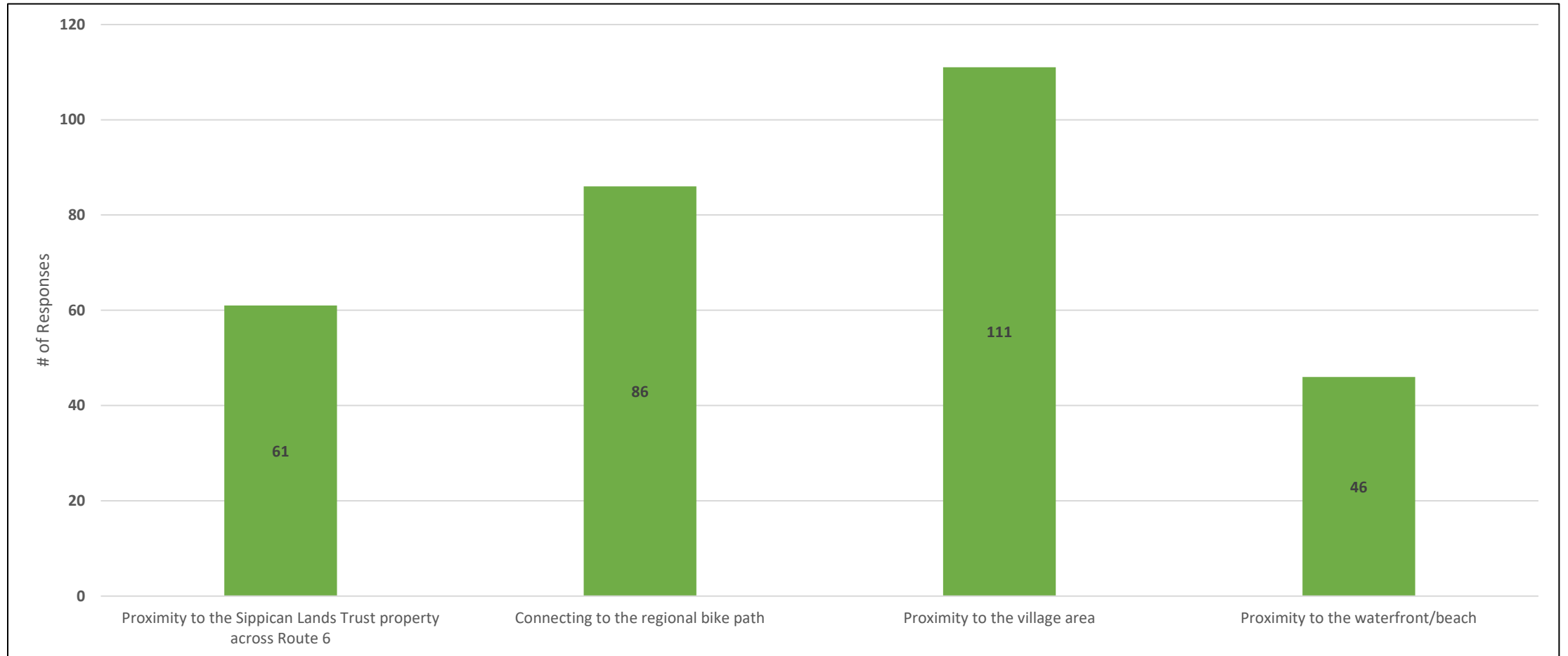


## Q8. Which specific types of conservation would you like to see as part of a redesigned Holmes Woods Park? (select all that apply)





# Q9. Do you see Holmes Woods connecting to the greater open space and recreation network in Marion through... (select all that apply)





# Today's Meeting

---



A “Design Charrette” is a hands-on meeting where participants can outline their personal vision.

Nothing is set in stone.



This can include such things as:

- Locating problem areas that need to be addressed
- Identifying the types and locations of recreational amenities
- Creating connections with the greater open space and recreation network in Marion

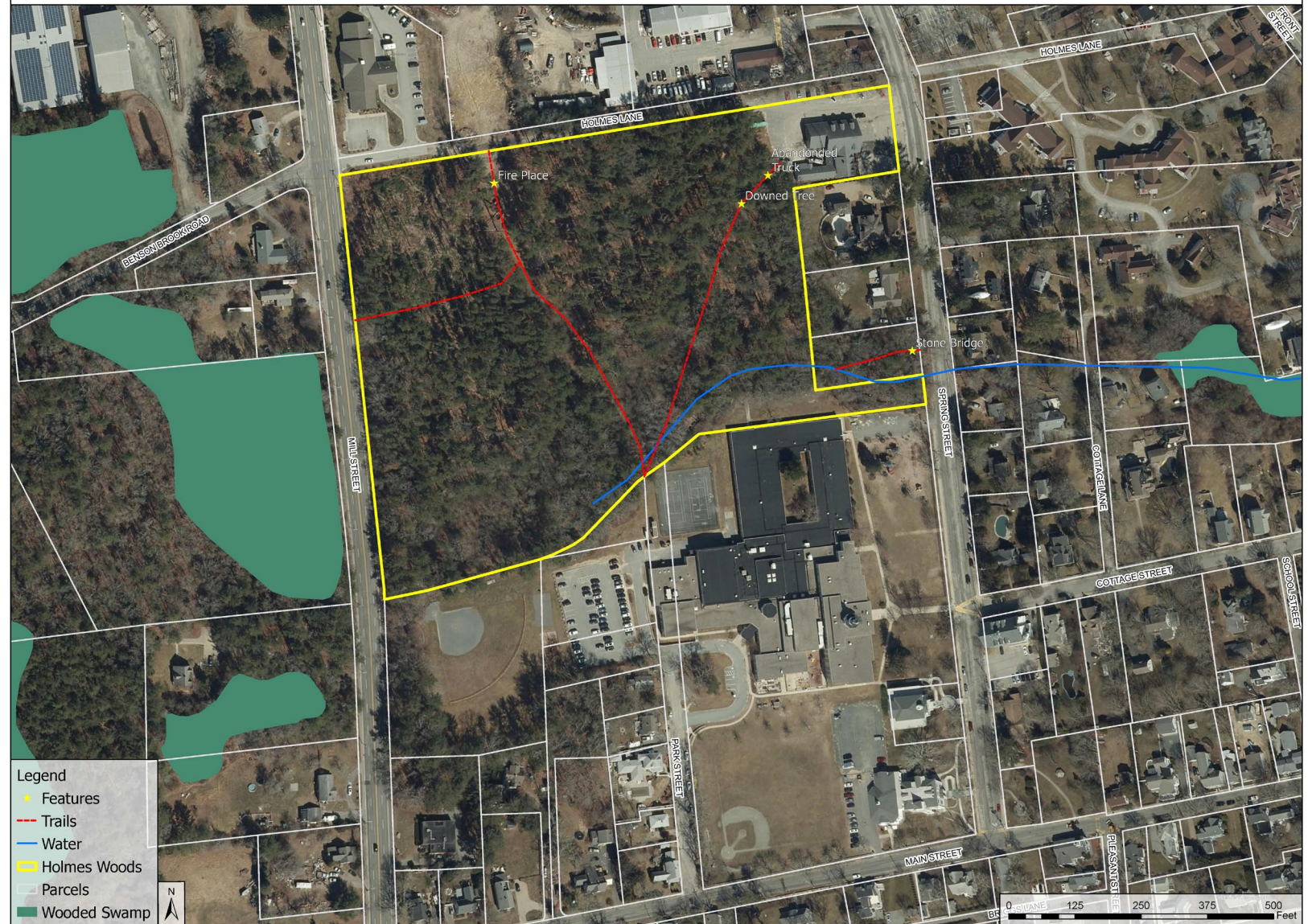


## Holmes Woods Trails

This property contains 14.7 acres.

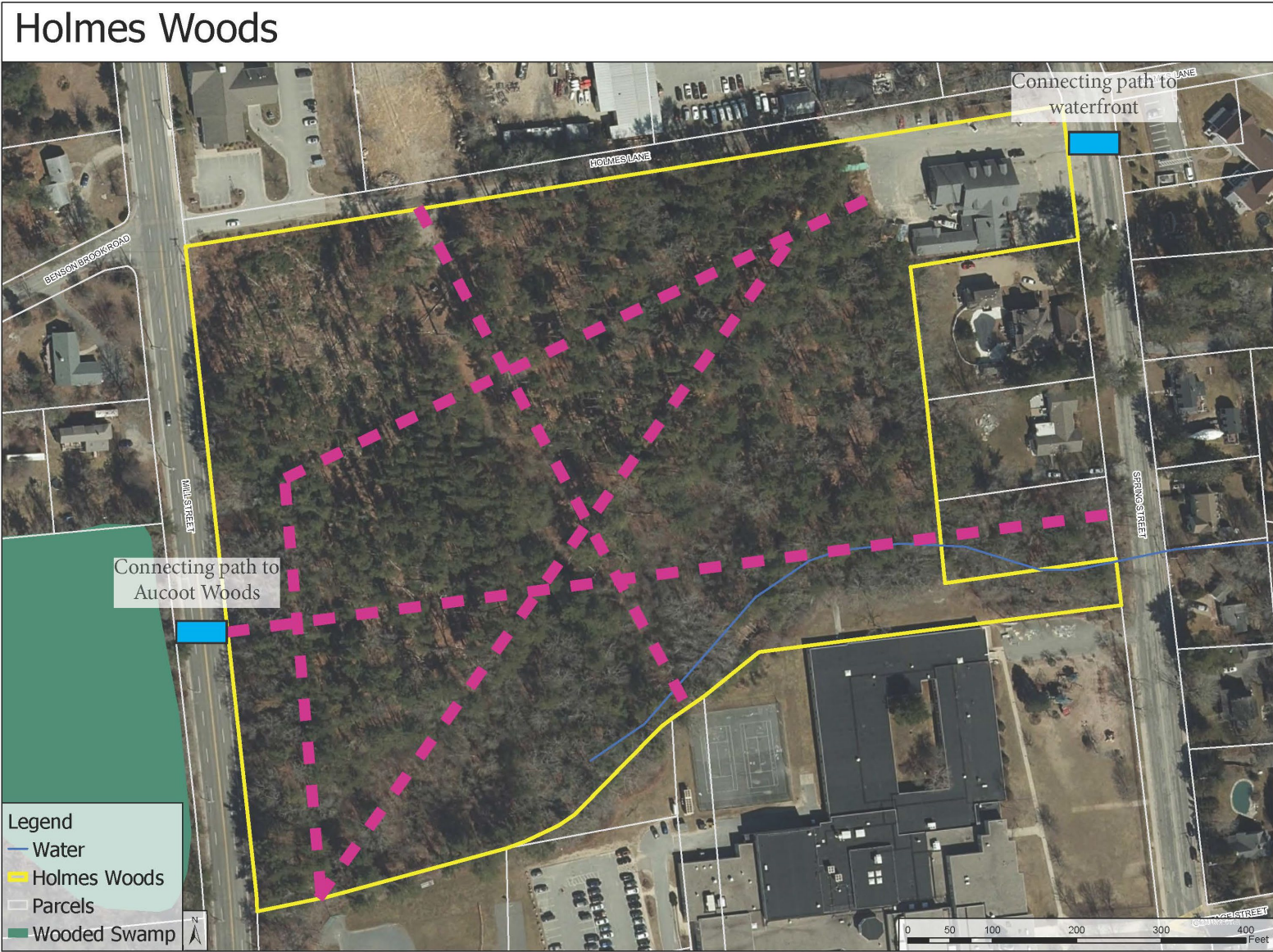
For scale, the average:

- Baseball field: 4.5 acres
- Soccer field: 1.86 acres
- Playground: 0.5 – 5 acres
- Community garden: 0.25 – 1 acres





# Discussion Idea 1: Cleaned Up



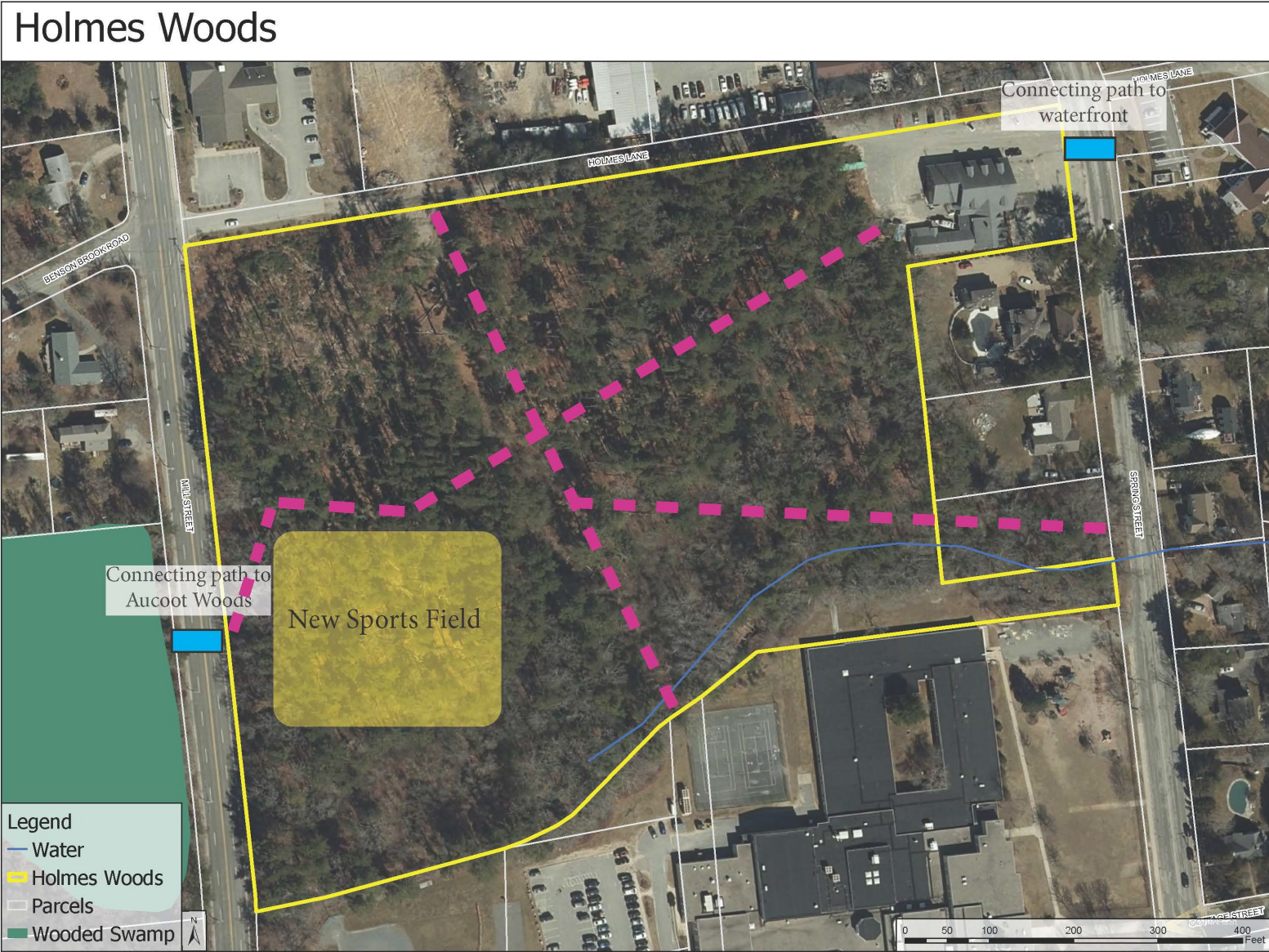


# Discussion Idea 2: Enhanced Recreation Space





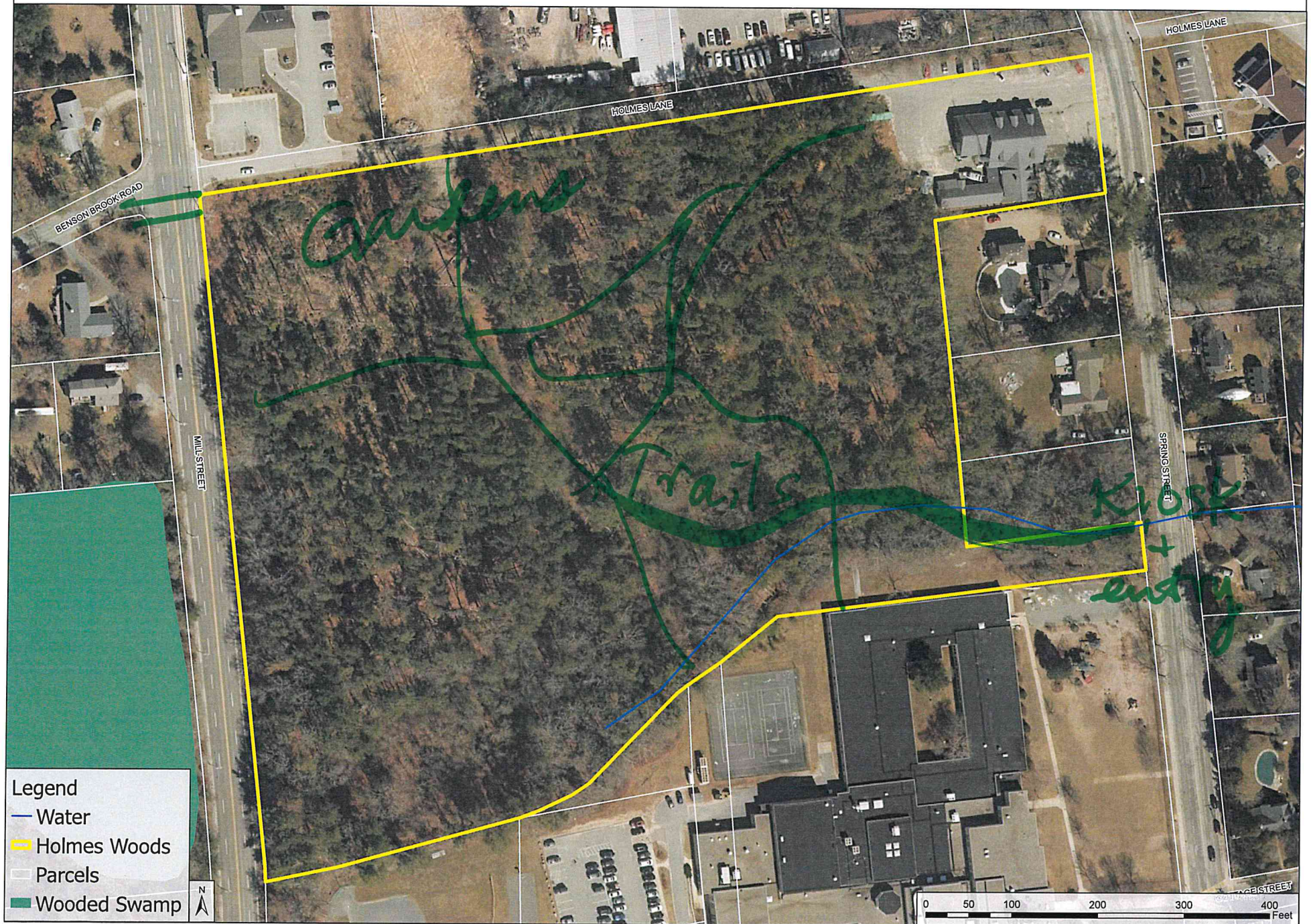
# Discussion Idea 3: Balanced Active and Passive Recreation



# Workshop Results

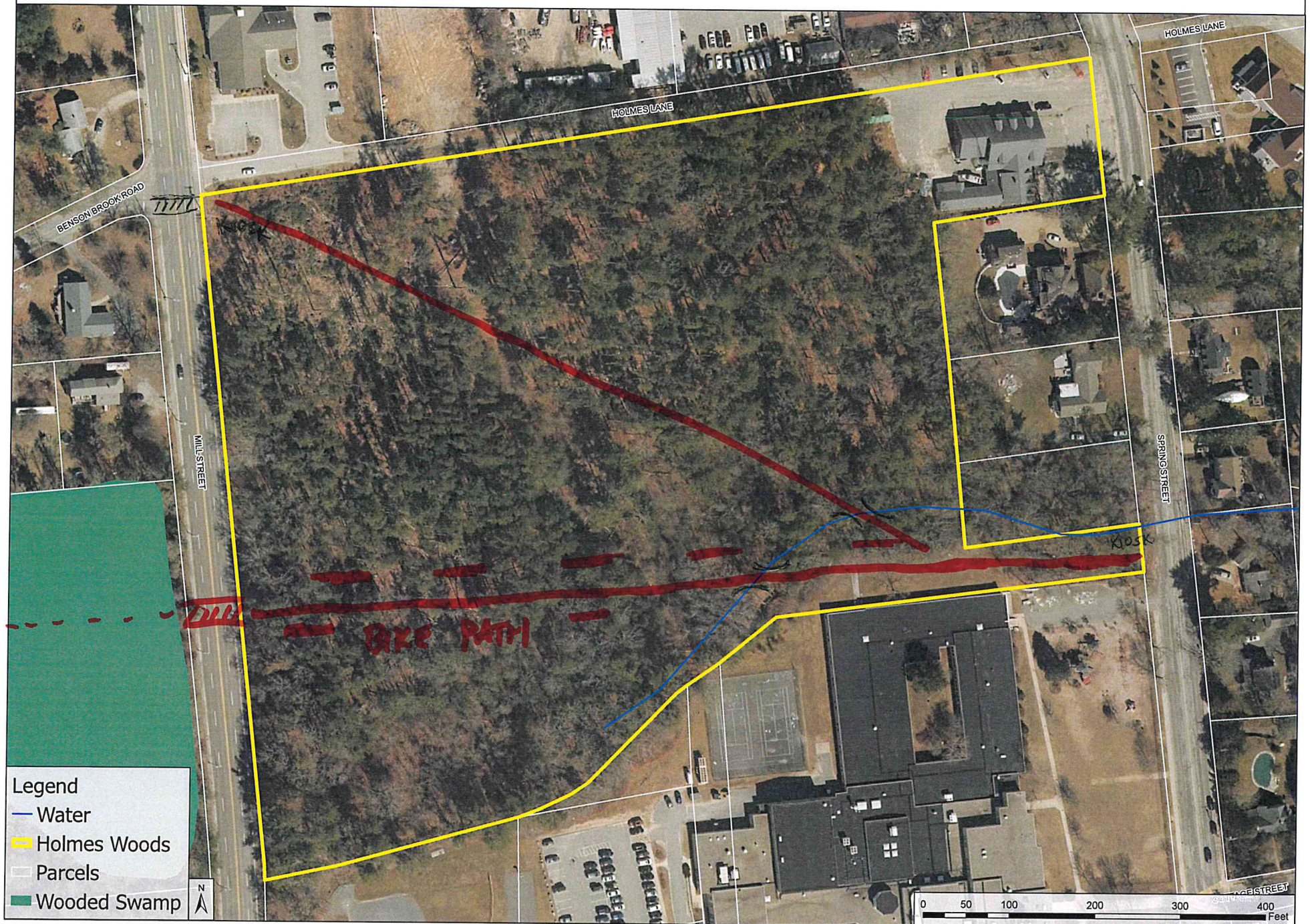


# Holmes Woods





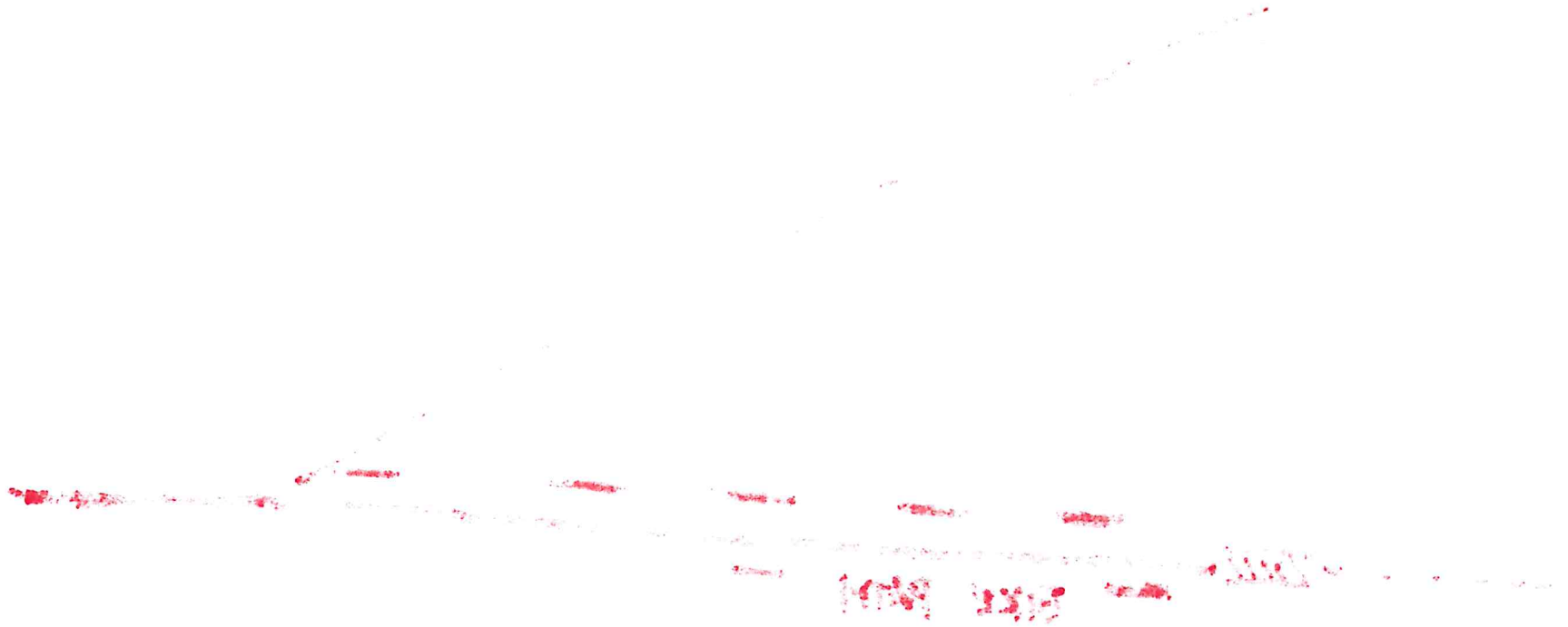
# Holmes Woods





Bike Path SPRING → RT 6 crossing to SLT land and on to Reel Trail or Diagonal to Benson Brook  
New bike path lined with raised beds for community gardens

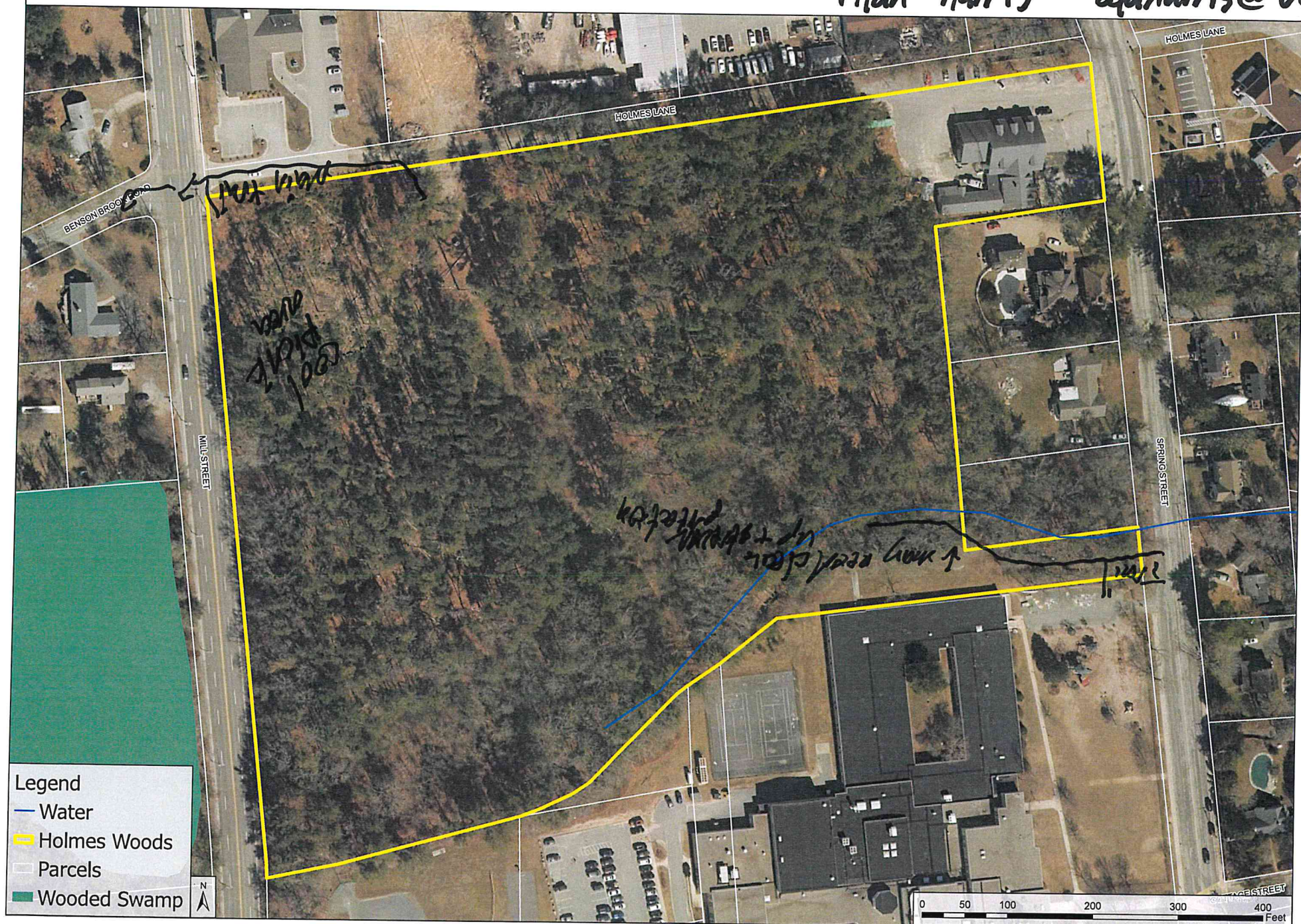
Bike path(s) should be similar in design to Reel Trail → paved, same width etc.





# Holmes Woods

Alan Harris alaharris@verizon.net





- Better integration between school premises + the woods access points/trails
- safer for kids to use the area
-



# Holmes Woods



## Legend

- Water
- Holmes Woods
- Parcels
- Wooded Swamp