

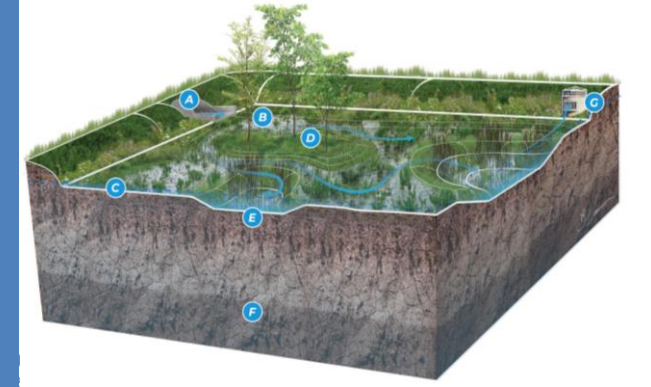
Compton's Corners – 10% Retrofit Concepts

R-1 Compton's Corners – Bioretention (Outfall 51)



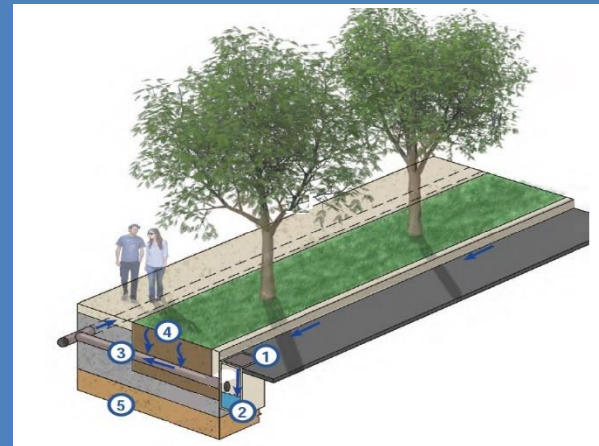
- Bioretention for filtering runoff with soil and native plants
- Treats 0.16 acres of road runoff
- Complement Crosswalk Project
- Opportunity to Partner with Garden Club
- Great site for signage/benches
- Overflow into existing pipe/outfall

R-2 Harvard St – Constructed Wetland (Outfall 50)



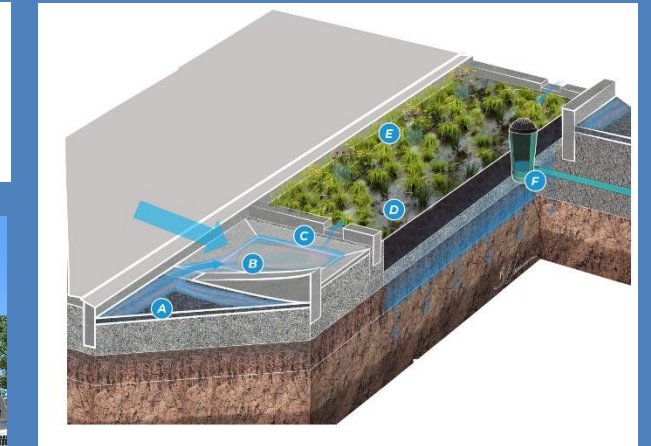
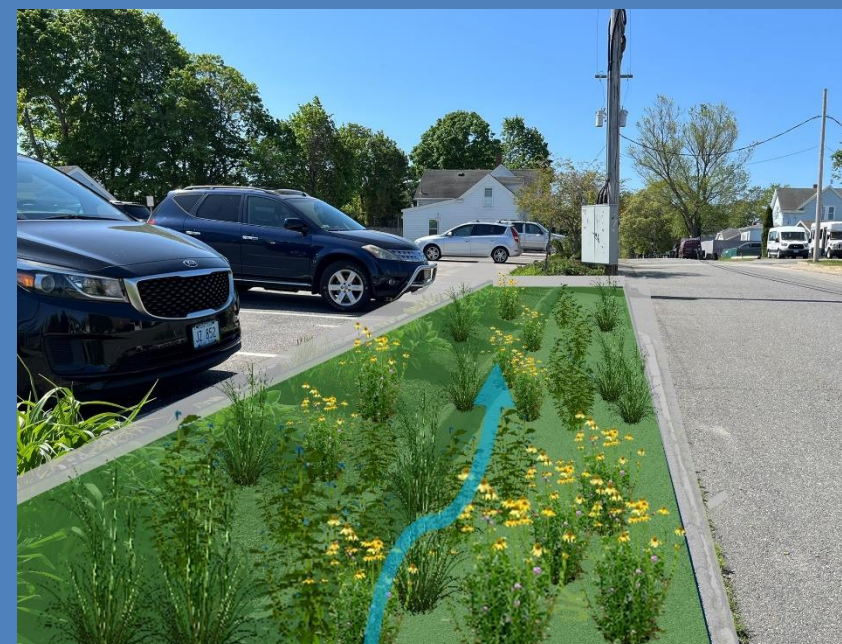
- Constructed wetland mimics natural wetland processes/habitat
- Treats 2.7 acres of neighborhood runoff in "paper road" right-of-way
- Consistent groundwater inputs
- Opportunity to add public access/boardwalk from Harvard to Anthony
- Overflow into existing pipe

R-3 Metacomet/Massasoit – Tree Trenches (Outfall 50)



- Tree trenches let stormwater soak into the ground (shrubs ok too)
- Treats 0.15 acres of road runoff
- Can plant trees here (overhead wires are across street)
- Adjust design as needed for septic/trees/utilities
- Overflow into existing pipe

R-4 COA Parking Lot – Bioretention (Outfall 49A)



- Hard-edged bioretentions work well along sidewalks & parking lots
- Treats 0.36 acres of parking lot
- No trees (overhead wires)
- Adjust design as needed for utilities
- Overflow into existing catch basin