

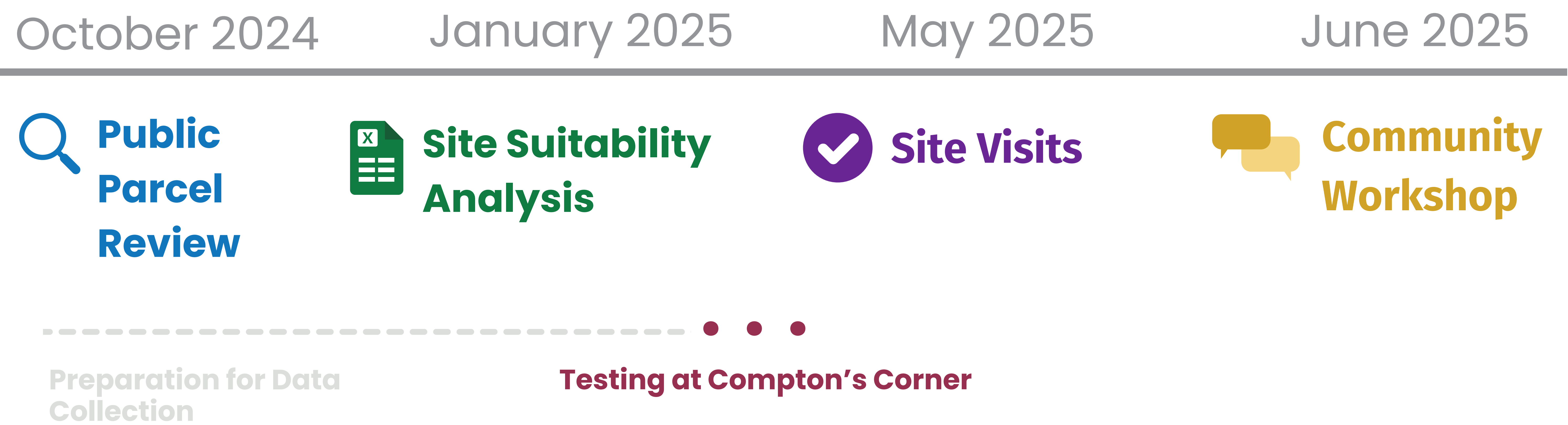
Project Introduction

What does stormwater testing involve?

Stormwater testing helps to identify pollutants from municipal runoff or nonpoint source pollution (NPS). Common pollutants in Massachusetts include **fertilizers and herbicides**, **oil and grease**, and **bacteria and nutrients from animal wastes**. Identifying harmful pollutants in stormwater and targeting them at their source benefits surrounding ecosystems and contributes positively to a municipality's overall wellbeing.

Compton's Corner is Swansea's stormwater testing site and has four outfalls (drains) which feed into Mount Hope Bay. SRPEDD staff tested stormwater during two stormwater events by collecting samples and recording associated data on water temperature and flow.

Project Timeline



How does stormwater testing benefit Swansea?

- Prevents contamination and enhances safety
- Ensures shellfish beds stay healthy
- Protects native plants and wildlife
- Promotes legal drainage systems
- Reduces infrastructure and maintenance costs
- Promotes community involvement

Learn more about this project here



Stormwater Pollution Mitigation

See the map below to locate outfall and retrofitting sites.

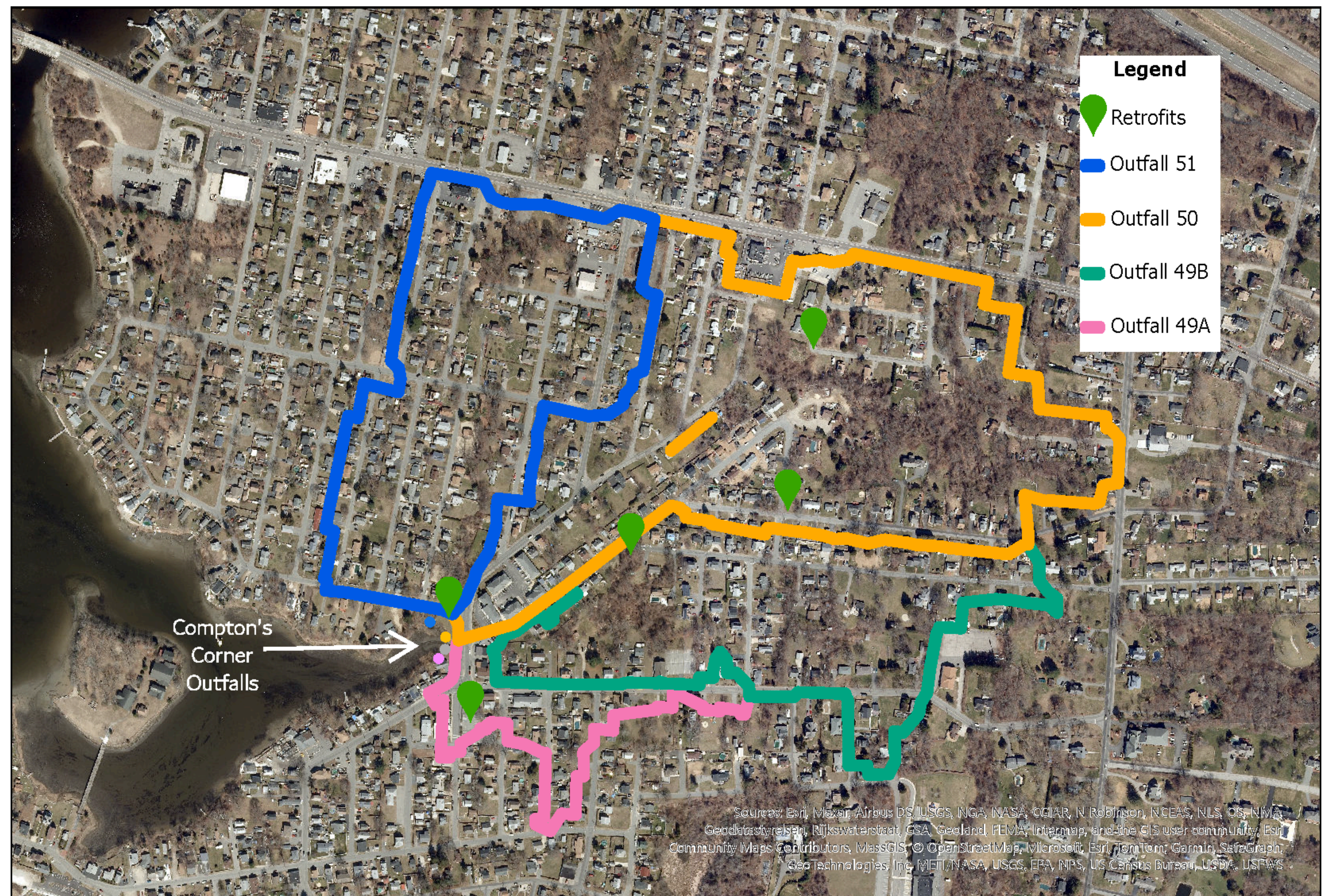
How to Read the Map

The green points on the map represent all of the sites SRPEDD and Horsley Witten reviewed as potential stormwater retrofitting sites. The grey areas and numbers correspond to the stormwater drainage outfall area for its respective neighborhood (i.e. neighborhood 51's stormwater flows into outfall 51, etc.)

What does retrofitting mean in this context?

Retrofitting the sites could include adding rain gardens, trees, bioswales, or anything else that provides passive water filtration to a given site depending on feasibility.

Compton's Corner Stormwater Outfall Map



How will these parcels help reduce stormwater pollution?

The site selection process was undergone to provide additional nature based solutions to reduce excess stormwater pollution. Chosen sites will be retrofitted to improve stormwater runoff quality before water reaches Compton's Corner.

How were sites selected?

Individual underutilized Town-owned parcels were reviewed for stormwater feasibility using the The Southeast New England Program (SNEP) Network Site Prioritization tool. This tool helps score sites by several different environmental characteristics all of which inform feasibility.

What would you like to see at these sites?
Leave us a note!